

**VOYAGEURS EXPEDITIONARY HIGH SCHOOL**  
**MINNESOTA CHARTER SCHOOL NO. 4107**  
**BEMIDJI, MINNESOTA**  
**FINANCIAL STATEMENTS**  
**AND**  
**INDEPENDENT AUDITOR'S REPORT**  
**JUNE 30, 2013**

**VOYAGEURS EXPEDITIONARY HIGH SCHOOL**  
**MINNESOTA CHARTER SCHOOL NO. 4107**  
**BEMIDJI, MINNESOTA**  
**JUNE 30, 2013**

**TABLE OF CONTENTS**

	<u>Page</u>
<b>OFFICIAL DIRECTORY</b>	<b>1</b>
<b>INDEPENDENT AUDITOR’S REPORT</b>	<b>2-4</b>
<b>REQUIRED SUPPLEMENTARY INFORMATION:</b>	
<b>Management’s Discussion and Analysis</b>	<b>5-15</b>
<b>FINANCIAL STATEMENTS:</b>	
<b>School-wide Financial Statements:</b>	
<b>Statement of Net Position</b>	<b>16</b>
<b>Statement of Activities</b>	<b>17</b>
<b>Fund Financial Statements:</b>	
<b>Balance Sheet – Governmental Funds</b>	<b>18</b>
<b>Reconciliation of the Balance Sheet – Governmental Funds to the Statement of Net Position</b>	<b>19</b>
<b>Statement of Revenues, Expenditures, and Changes in Fund Balances – Governmental Funds</b>	<b>20</b>
<b>Reconciliation of the Statement of Revenues, Expenditures, and Changes in Fund Balances – Governmental Funds to the Statement of Activities</b>	<b>21</b>
<b>Notes to Financial Statements</b>	<b>22-33</b>
<b>REQUIRED SUPPLEMENTARY INFORMATION:</b>	
<b>Budgetary Comparison Schedule:</b>	
<b>General Fund</b>	<b>34</b>
<b>Notes to the Required Supplementary Information</b>	<b>35</b>
<b>SUPPLEMENTARY INFORMATION:</b>	
<b>Fiscal Compliance Report – 6/30/2013</b>	<b>36</b>
<b>OTHER REPORTS:</b>	
<b>Independent Auditor’s Report on Compliance Based on an Audit of the Financial Statements Performed in Accordance With the <i>Minnesota Legal Compliance Audit Guide for Political Subdivisions</i></b>	<b>37</b>
<b>Independent Auditor’s Report on Internal Control Over Financial Reporting and on Compliance and Other Matters Based on an Audit of Financial Statements Performed in Accordance with <i>Government Auditing Standards</i></b>	<b>38-39</b>

**VOYAGEURS EXPEDITIONARY HIGH SCHOOL**  
**MINNESOTA CHARTER SCHOOL NO. 4107**  
**BEMIDJI, MINNESOTA**  
**YEAR ENDED JUNE 30, 2013**

**OFFICIAL DIRECTORY**  
(Unaudited)

**School Board Members and Officers:**

Chairperson	Chris Dunshee
Secretary	Angela Polman
Treasurer	Paul Johnson

**Board Members:**

Amanda Willis  
Becky Reinarz  
Michelle Thooft

**Administration:**

Executive Director	Julie Johnson-Willborg
Administrative Assistant/Secretary	Jean Fjelsta
Business Manager	Rita Poulton



MILLER MCDONALD, INC.  
*Certified Public Accountants*  
513 Beltrami Avenue  
P.O. Box 486  
Bemidji, MN 56619  
(218) 751 - 6300  
Fax (218) 751 - 0782  
[www.millermcdonald.com](http://www.millermcdonald.com)

## **INDEPENDENT AUDITOR'S REPORT**

**The Board of Education  
Voyageurs Expeditionary High School  
Minnesota Charter School No. 4107  
Bemidji, Minnesota**

### **Report on the Financial Statements**

We have audited the accompanying financial statements of the governmental activities, each major fund and the aggregate remaining fund information of Voyageurs Expeditionary High School, Minnesota Charter School No. 4107, as of and for the year ended June 30, 2013, and the related notes to the financial statements, which collectively comprise the School's basic financial statements as listed in the table of contents.

### **Management's Responsibility for the Financial Statements**

Management is responsible for the preparation and fair presentation of these financial statements in accordance with accounting principles generally accepted in the United States of America; this includes the design, implementation, and maintenance of internal control relevant to the preparation and fair presentation of financial statements that are free from material misstatement, whether due to fraud or error.

### **Auditor's Responsibility**

Our responsibility is to express opinions on these financial statements based on our audit. We conducted our audit in accordance with auditing standards generally accepted in the United States of America and the standards applicable to financial audits contained in *Government Auditing Standards*, issued by the Comptroller General of the United States. Those standards require that we plan and perform the audit to obtain reasonable assurance about whether the financial statements are free of material misstatements.

An audit involves performing procedures to obtain audit evidence about the amounts and disclosures in the financial statements. The procedures selected depend on the auditor's judgment, including the assessment of the risks of material misstatement of the financial statements, whether due to fraud or error. In making those risk assessments, the auditor considers internal control relevant to the entity's preparation and fair presentation of the financial statements in order to design audit procedures that are appropriate in the circumstances, but not for the purpose of expressing an opinion on the effectiveness of the entity's internal control. Accordingly, we express no such opinion. An audit also includes evaluating the appropriateness of accounting policies used and the reasonableness of significant accounting estimates made by management, as well as evaluating the overall presentation of the financial statements.

We believe that the audit evidence we have obtained is sufficient and appropriate to provide a basis for our audit opinions.

Voyageurs Expeditionary High School  
Minnesota Charter School No. 4107

**Opinions**

In our opinion, the financial statements referred to above present fairly, in all material respects, the respective financial position of the governmental activities, each major fund and the aggregate remaining fund information of Voyageurs Expeditionary High School, Minnesota Charter School No. 4107, as of June 30, 2013, and the respective changes in financial position thereof for the year then ended in accordance with accounting principles generally accepted in the United States of America.

**Other Matters**

*Required Supplementary Information*

Accounting principles generally accepted in the United States of America require that the management's discussion and analysis and budgetary comparison information on pages 5 through 15 and 34 through 35 be presented to supplement the basic financial statements. Such information, although not a part of the basic financial statements, is required by the Governmental Accounting Standards Board, who considers it to be an essential part of financial reporting for placing the basic financial statements in an appropriate operational, economic, or historical context. We have applied certain limited procedures to the required supplementary information in accordance with auditing standards generally accepted in the United States of America, which consisted of inquiries of management about the methods of preparing the information and comparing the information for consistency with management's responses to our inquiries, the basic financial statements, and other knowledge we obtained during our audit of the basic financial statements. We do not express an opinion or provide any assurance on the information because the limited procedures do not provide us with sufficient evidence to express an opinion or provide any assurance.

*Other Information*

Our audit was conducted for the purpose of forming an opinion on the financial statements that collectively comprise Voyageurs Expeditionary High School, Minnesota Charter School No. 4107's financial statements. The official directory and fiscal compliance report are presented for purposes of additional analysis and are not a required part of the financial statements. The fiscal compliance report is the responsibility of management and was derived from and relates directly to the underlying accounting and other records used to prepare the financial statements. Such information has been subjected to the auditing procedures applied in the audit of the financial statements and certain additional procedures, including comparing and reconciling such information directly to the underlying accounting and other records used to prepare the basic financial statements or to the basic financial statements themselves, and other additional procedures in accordance with auditing standards generally accepted in the United States of America. In our opinion, the information is fairly stated in all material respects in relation to the financial statements as a whole.

The official directory has not been subjected to the auditing procedures applied in the audit of the basic financial statements and, accordingly, we do not express an opinion or provide any assurance on it.

Voyageurs Expeditionary High School  
Minnesota Charter School No. 4107

**Other Reporting Required by Government Auditing Standards**

In accordance with *Government Auditing Standards*, we have also issued a report dated November 6, 2013, on our consideration of the Voyageurs Expeditionary High School, Minnesota Charter School No. 4107's internal control over financial reporting and our tests of its compliance with certain provisions of laws, regulations, contracts, and grant agreements and other matters. The purpose of that report is to describe the scope of our testing of internal control over financial reporting and compliance and the results of that testing, and not to provide an opinion on the internal control over financial reporting or on compliance. That report is an integral part of an audit performed in accordance with *Government Auditing Standards* in considering Voyageurs Expeditionary High School, Minnesota Charter School No. 4107's internal control over financial reporting and compliance.

*Miller McDonald, Inc.*

November 6, 2013  
Bemidji, Minnesota

**VOYAGEURS EXPEDITIONARY HIGH SCHOOL**  
**MINNESOTA CHARTER SCHOOL NO. 4107**  
**BEMIDJI, MINNESOTA**  
**MANAGEMENT'S DISCUSSION AND ANALYSIS**  
**YEAR ENDED JUNE 30, 2013**

This section of Voyageurs Expeditionary High School, Minnesota Charter School No. 4107's, annual financial report presents our discussion and analysis of the School's financial performance during the fiscal year that ended on June 30, 2013. Please read it in conjunction with the School's financial statements, which immediately follow this section.

**FINANCIAL HIGHLIGHTS**

Key financial highlights for the year ended June 30, 2013 include the following:

- School-wide revenues were \$1,072,279 and overall expenses were \$1,044,751.
- Governmental activities reported an excess of revenues over expenses of \$27,528 thereby increasing net position to \$349,533.
- Governmental fund balances totaled \$284,422 at June 30, 2013, which was an increase of \$33,872 from June 30, 2012.

**OVERVIEW OF THE FINANCIAL STATEMENTS**

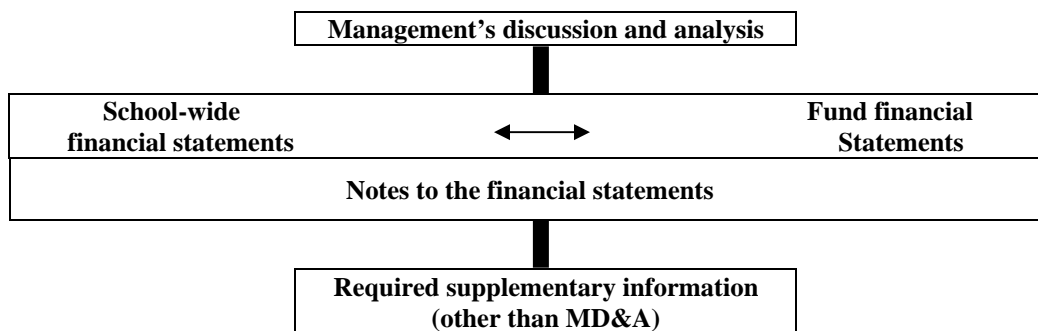
The financial section of the annual report consists of four parts – Independent Auditor's Report, required supplementary information, which includes the management's discussion and analysis (this section), the basic financial statements, and supplementary information. The basic financial statements include two kinds of statements that present different views of the School:

- The first two statements are *school-wide financial statements* that provide both *short-term* and *long-term* information about the School's overall financial status.
- The remaining statements are *fund-financial statements* that focus on individual parts of the School, reporting on the School's operations in more detail than the school-wide statements.
- The *governmental funds statements* report how basic services such as regular and special education were financed in the short-term as well as what remains for future spending.

**VOYAGEURS EXPEDITIONARY HIGH SCHOOL**  
**MINNESOTA CHARTER SCHOOL NO. 4107**  
**BEMIDJI, MINNESOTA**  
**MANAGEMENT'S DISCUSSION AND ANALYSIS**  
**YEAR ENDED JUNE 30, 2013**

**OVERVIEW OF THE FINANCIAL STATEMENTS** (Continued)

The financial statements also include notes that explain some of the information in the statements and provide more detailed data. The statements are followed by a section of required supplementary information that further explains and supports the financial statements with a comparison of the School's general fund budget for the year. The following diagram explains how the various parts of this annual report are arranged and related to one another.



The major features of the School's financial statements, including the portion of the School's activities they cover and the types of information they contain, are summarized below. The remainder of the overview section of the MD&A highlights the structure and content of each of the statements.

	School-wide Statements	Fund Financial Statements Governmental Funds
Scope	Entire School except fiduciary funds	The activities of the School that are not proprietary or fiduciary type activities, such as instructional education and building maintenance.
Required financial statements	<ul style="list-style-type: none"> <li>• Statement of net position</li> <li>• Statement of activities</li> </ul>	<ul style="list-style-type: none"> <li>• Balance sheet</li> <li>• Statement of revenues, expenditures, and changes in fund balances</li> </ul>
Accounting basis and measurement focus	Accrual accounting and economic resources focus	Modified accrual accounting and current financial focus
Type of assets/liability information	All assets and liabilities, both financial and capital, short-term and long-term	Generally assets expected to be used up and liabilities that come due during the year or soon thereafter; no capital assets or long-term liabilities included
Type of inflow/outflow information	All revenues and expenses during year, regardless of when cash is received or paid	Revenues for which cash is received during or soon after the end of the year; expenditures when goods or services have been received and the related liability is due and payable



**VOYAGEURS EXPEDITIONARY HIGH SCHOOL**  
**MINNESOTA CHARTER SCHOOL NO. 4107**  
**BEMIDJI, MINNESOTA**  
**MANAGEMENT'S DISCUSSION AND ANALYSIS**  
**YEAR ENDED JUNE 30, 2013**

**OVERVIEW OF THE FINANCIAL STATEMENTS** (Continued)

**School-wide Statements**

The school-wide statements report information about the School as a whole using accounting methods similar to those used by private-sector companies. The statement of net position includes all of the School's assets and liabilities. All of the current year's revenues and expenses are accounted for in the statement of activities regardless of when cash is received or paid.

The school-wide statements report the School's net position and how they changed. Net position – the difference between the School's assets and liabilities – are one way to measure the School's financial health or position.

- Over time, increases or decreases in the School's net position are an indicator of whether its financial position is improving or deteriorating, respectively.
- To assess the overall health of the School, you need to consider additional non-financial factors such as student enrollment, and the ability to lease adequate building space at an affordable cost.

In the school-wide financial statements the School's activities are shown in one category:

- **Governmental Activities** – The majority of the School's basic services are included within these activities, such as, regular and special education, administration, and food services. State aids finance the majority of these activities.

**Fund Financial Statements**

The fund financial statements provide more detailed information about the School's funds – focusing on its most significant or “major” funds – not the School as a whole. Funds are accounting devices the School uses to keep track of specific sources of funding and spending on particular programs.

- Some funds are required by State law.
- The School establishes other funds to control and manage money for particular purposes or to show that it is properly using certain revenues (e.g., federal grants).

The School has one type of fund:

**Governmental Funds** – The School's basic services are included in governmental funds, which generally focus on (1) how cash and other financial assets that can readily be converted to cash flow in and out and (2) the balances left at year-end that are available for spending. Consequently, the governmental fund statements provide a detailed short-term view that helps to determine whether there are more or fewer financial resources that can be spent in the near future to finance the School's programs. Because this information does not encompass the additional long-term focus of the school-wide statements, we provide additional information following the governmental fund statements that explains the relationships (or differences) between them.

**VOYAGEURS EXPEDITIONARY HIGH SCHOOL**  
**MINNESOTA CHARTER SCHOOL NO. 4107**  
**BEMIDJI, MINNESOTA**  
**MANAGEMENT'S DISCUSSION AND ANALYSIS**  
**YEAR ENDED JUNE 30, 2013**

**FINANCIAL ANALYSIS OF THE SCHOOL AS A WHOLE**  
**(SCHOOL-WIDE FINANCIAL STATEMENTS)**

**Net Position**

The School's combined net position was \$349,533 at June 30, 2013 (see the following table). At June 30, 2012 the net position was \$322,005, with an increase of \$27,528 from operating activities for the year ended June 30, 2013.

	2013	2012	Net Changes	
			Amount	Percent
Current and other assets	\$ 330,837	\$ 342,276	\$ (11,439)	-3.34%
Capital assets, net of depreciation	65,111	71,455	(6,344)	-8.88%
<b>Total assets</b>	<b>395,948</b>	<b>413,731</b>	<b>(17,783)</b>	<b>-4.30%</b>
Current liabilities	46,415	91,726	(45,311)	-49.40%
<b>Net position:</b>				
Net Investment in Capital Assets	65,111	71,455	(6,344)	-8.88%
Restricted	1,069	105	964	918.10%
Unrestricted	283,353	250,445	32,908	13.14%
<b>Total net position</b>	<b>\$ 349,533</b>	<b>\$ 322,005</b>	<b>\$ 27,528</b>	<b>8.55%</b>

Net position increased by 8.55% from the prior year. The change was primarily the result of excess revenues over expenditures from operations in the governmental funds.

**VOYAGEURS EXPEDITIONARY HIGH SCHOOL**  
**MINNESOTA CHARTER SCHOOL NO. 4107**  
**BEMIDJI, MINNESOTA**  
**MANAGEMENT'S DISCUSSION AND ANALYSIS**  
**YEAR ENDED JUNE 30, 2013**

**FINANCIAL ANALYSIS OF THE SCHOOL AS A WHOLE**  
**(SCHOOL-WIDE FINANCIAL STATEMENTS) (Continued)**

**Change in Net Position**

The increase in net position occurs as a result of the School's revenues being more than its expenses for the year ended June 30, 2013. A summary of the School's revenues and expenses, along with the percentages for each category follows:

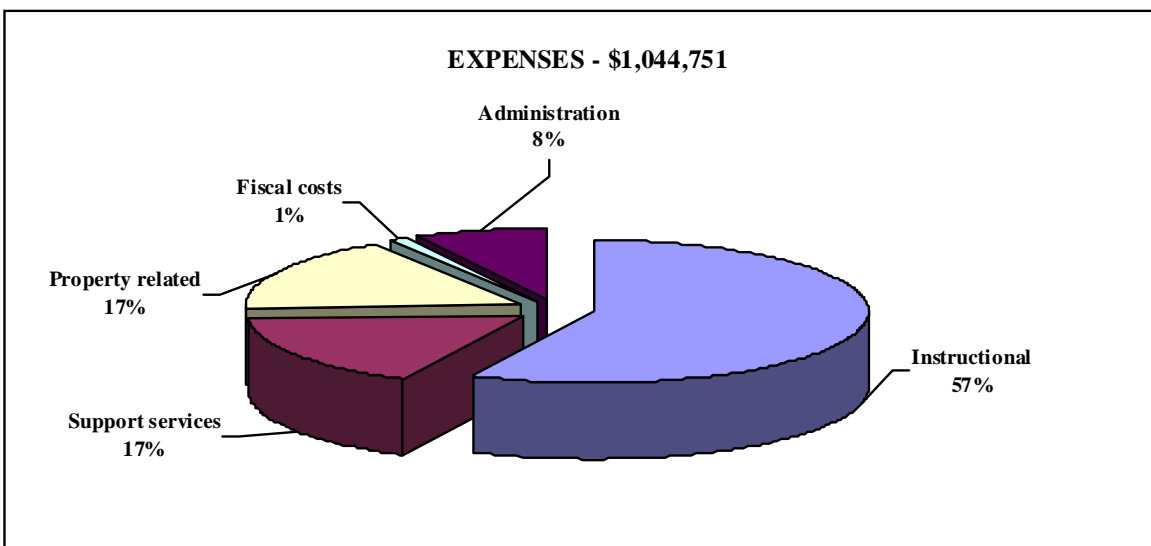
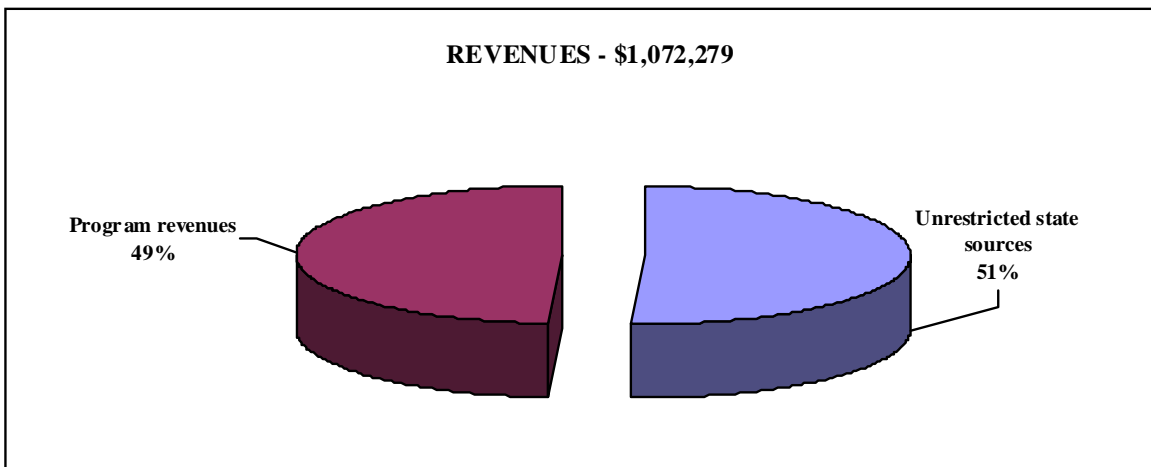
	2013		2012		Net Changes	
	Amounts	Percent	Amounts	Percent	Amounts	Percent
<b><u>Revenues:</u></b>						
Program Revenues:						
Charges for Services	\$ 13,853	1.29%	\$ 14,311	1.39%	\$ (458)	-3.20%
Operating Grants and Contributions	513,643	47.90%	512,779	49.95%	864	0.17%
Total Program Revenues	527,496	49.19%	527,090	51.34%	406	0.08%
General Revenues:						
Aids and Payments from State Sources	543,929	50.73%	499,001	48.60%	44,928	9.00%
Other Sources	854	0.08%	548	0.05%	306	55.84%
Total General Revenues	544,783	50.81%	499,549	48.66%	45,234	9.05%
Total Revenues	1,072,279	100.00%	1,026,639	100.00%	45,640	4.45%
<b><u>Expenses:</u></b>						
<b><u>Instructional Services:</u></b>						
Regular Instruction	446,028	42.69%	443,960	45.29%	2,068	0.47%
Exceptional Instruction	151,575	14.51%	151,216	15.42%	359	0.24%
Total Instructional Services	597,603	57.20%	595,176	60.71%	2,427	0.41%
<b><u>Support Services:</u></b>						
District Support Services	106,227	10.17%	87,172	8.89%	19,055	21.86%
Instructional Support Services	16,128	1.54%	8,616	0.88%	7,512	87.19%
Pupil Support Services	53,838	5.15%	45,959	4.70%	7,879	17.14%
Total Support Services	176,193	16.86%	141,747	14.46%	34,446	24.30%
Administration	81,378	7.79%	72,384	7.38%	8,994	12.43%
Site, Buildings and Equipment	177,920	17.03%	160,787	16.40%	17,133	10.66%
Fiscal and Other Fixed Costs	11,657	1.12%	10,319	1.05%	1,338	12.97%
Total Expenses	1,044,751	100.00%	980,413	100.00%	64,338	6.56%
Changes in Net Position	\$ 27,528		\$ 46,226		\$ (18,698)	

**VOYAGEURS EXPEDITIONARY HIGH SCHOOL**  
**MINNESOTA CHARTER SCHOOL NO. 4107**  
**BEMIDJI, MINNESOTA**  
**MANAGEMENT'S DISCUSSION AND ANALYSIS**  
**YEAR ENDED JUNE 30, 2013**

**FINANCIAL ANALYSIS OF THE SCHOOL AS A WHOLE**  
**(SCHOOL-WIDE FINANCIAL STATEMENTS) (Continued)**

The School's total revenues consisted of program revenues of \$527,496, unrestricted payments from state sources of \$543,929, and miscellaneous revenues of \$854. Expenses totaling \$1,044,751 consisted of instructional costs of \$597,603; support services of \$176,193; site, buildings and equipment related costs of \$177,920; fiscal and fixed-cost programs of \$11,657; and administrative costs of \$81,378.

The following charts express revenues and expenses for the year in broad categories:



**VOYAGEURS EXPEDITIONARY HIGH SCHOOL**  
**MINNESOTA CHARTER SCHOOL NO. 4107**  
**BEMIDJI, MINNESOTA**  
**MANAGEMENT'S DISCUSSION AND ANALYSIS**  
**YEAR ENDED JUNE 30, 2013**

**FINANCIAL ANALYSIS OF THE SCHOOL AS A WHOLE**  
**(SCHOOL-WIDE FINANCIAL STATEMENTS) (Continued)**

The net cost of governmental activities is the total costs less program revenues applicable to each category. Total and net costs for the year ended June 30, 2013 and 2012 are as follows:

	Cost of Services - 2013		Cost of Services - 2012	
	Total	Net	Total	Net
<b>Expenses:</b>				
Administration	\$ 81,378	\$ 69,891	\$ 72,384	\$ 57,822
District Support Services	106,227	106,227	87,172	74,576
Regular Instruction	446,028	249,279	443,960	256,592
Exceptional Instruction	151,575	(10,107)	151,216	(28,033)
Instructional Support Services	16,128	16,128	8,616	8,616
Pupil Support Services	53,838	9,624	45,959	10,160
Site, Buildings and Equipment	177,920	64,556	160,787	53,975
Fiscal and Other Fixed Costs	11,657	11,657	10,319	10,319
<b>Total Expenses</b>	<b>\$ 1,044,751</b>	<b>\$ 517,255</b>	<b>\$ 980,413</b>	<b>\$ 444,027</b>

**FINANCIAL ANALYSIS OF THE SCHOOL'S FUNDS**  
**(FUND FINANCIAL STATEMENTS)**

**Fund Balances**

The financial performance of the School as a whole is reflected in its governmental funds as well. As the School completed the year, its governmental funds reported a combined fund balance of \$284,422. This was an increase of \$33,872 from \$250,550 at the end of the prior year. The increase was primarily the result of excess revenues over expenditures and other financing uses in the general fund of \$32,908. The food service fund reported an excess of revenues and other financing sources over expenditures of \$964.

**Revenues and Expenditures**

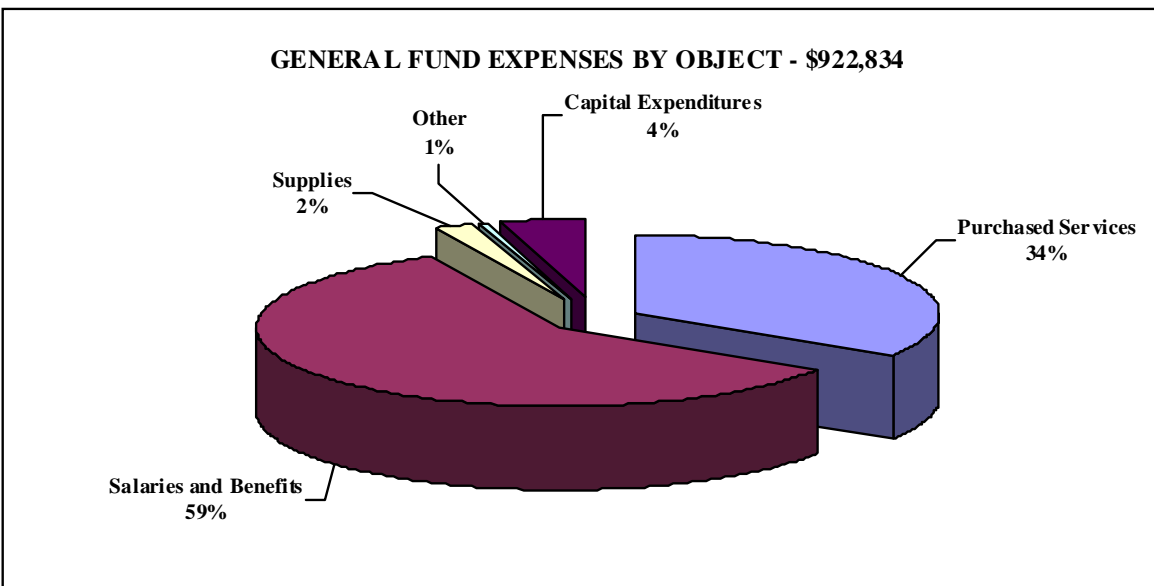
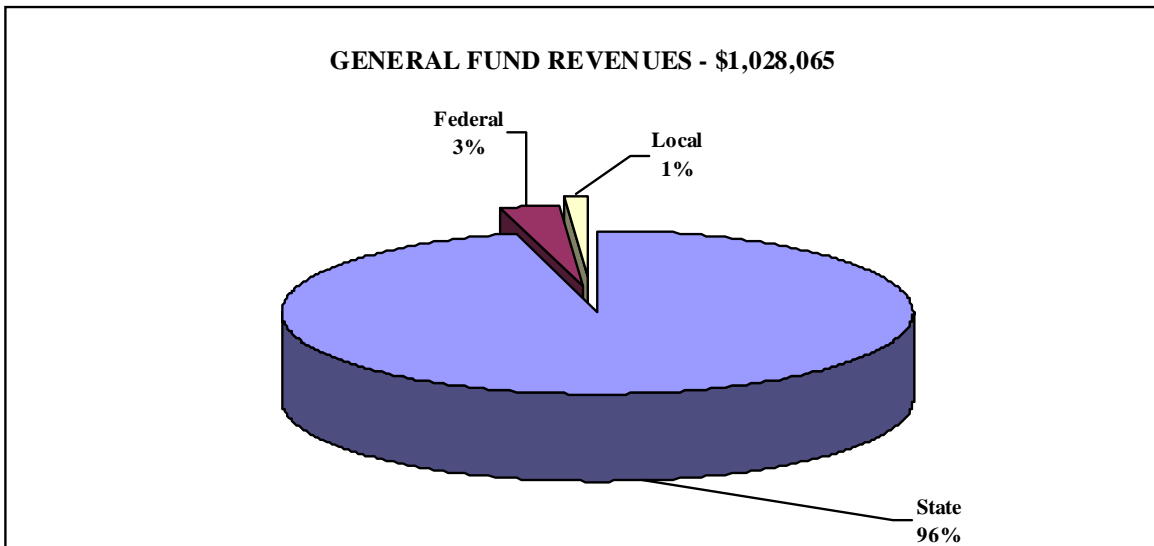
Revenues of the School's governmental funds totaled \$1,072,279 while total expenditures were \$1,038,407. A summary of the revenues and expenditures reported on the governmental fund financial statements are as follows:

	Revenues	Expenditures	Other Financing Sources (Uses)	Fund Balance Increase (Decrease)
General Fund	\$ 1,028,065	\$ 992,834	\$ (2,323)	\$ 32,908
Food Service Fund	44,214	45,573	2,323	964
<b>Totals</b>	<b>\$ 1,072,279</b>	<b>\$ 1,038,407</b>	<b>\$ -</b>	<b>\$ 33,872</b>

**VOYAGEURS EXPEDITIONARY HIGH SCHOOL**  
**MINNESOTA CHARTER SCHOOL NO. 4107**  
**BEMIDJI, MINNESOTA**  
**MANAGEMENT'S DISCUSSION AND ANALYSIS**  
**YEAR ENDED JUNE 30, 2013**

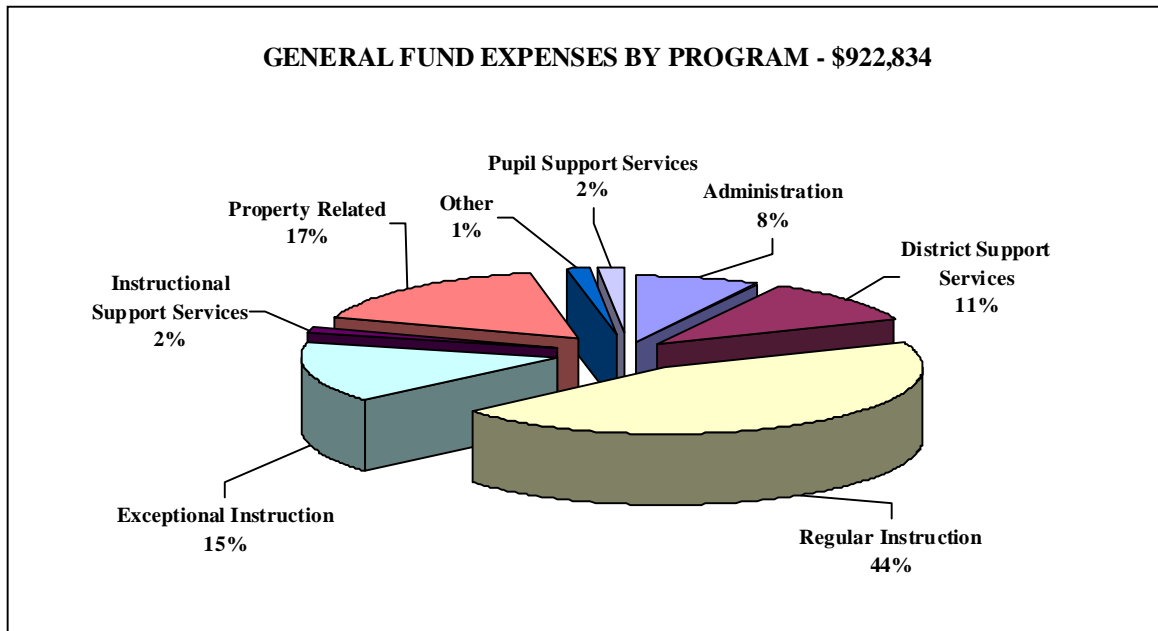
**FINANCIAL ANALYSIS OF THE SCHOOL'S FUNDS**  
**(FUND FINANCIAL STATEMENTS) (Continued)**

The following graphs are presented for the general fund revenues and expenditures:



**VOYAGEURS EXPEDITIONARY HIGH SCHOOL**  
**MINNESOTA CHARTER SCHOOL NO. 4107**  
**BEMIDJI, MINNESOTA**  
**MANAGEMENT'S DISCUSSION AND ANALYSIS**  
**YEAR ENDED JUNE 30, 2013**

**FINANCIAL ANALYSIS OF THE SCHOOL'S FUNDS**  
**(FUND FINANCIAL STATEMENTS) (Continued)**



**General Fund Budgetary Highlights**

During the year ended June 30, 2013, the School made a revision to its general fund operating budget. In accordance with Minnesota Statutes, an expenditure budget must be in place prior to the beginning of the fiscal year in order to spend funds. Prior to July 1, the school board approves the budget for the next year.

The School's general fund budget anticipated that revenues would exceed expenditures by \$23,303. The actual results for the year reported revenues exceeded expenditures in the amount of \$35,231. Actual total revenues exceeding the budgeted amounts by \$34,474. Actual total expenditures exceeded the budget by \$22,546 mostly due to regular instruction expenditures which exceeded the budget by \$20,626.

**Regular Instruction expenditures exceeded budget due to:**

Fieldwork	\$10,603
Worker's Compensation Insurance	\$ 9,011

Fieldwork is the expenses for the field trips that students take during the year. In the current year the students went to New York and the travel expenses ended up being more than anticipated in the budget.

Worker's Compensation Insurance was more than budget because of the increase in unemployment which was reflected in the worker's compensation rates.

**VOYAGEURS EXPEDITIONARY HIGH SCHOOL**  
**MINNESOTA CHARTER SCHOOL NO. 4107**  
**BEMIDJI, MINNESOTA**  
**MANAGEMENT'S DISCUSSION AND ANALYSIS**  
**YEAR ENDED JUNE 30, 2013**

**CAPITAL ASSETS AND DEBT ADMINISTRATION**

**Capital Assets**

Voyageurs Expeditionary High School has maintained a capital asset inventory since inception. Additions during the year ended June 30, 2013 totaled \$18,114, consisting of equipment. \$44,121 of computer equipment and drinking fountains were disposed of during the year ended June 30, 2013. The depreciation expense for the year was \$19,259.

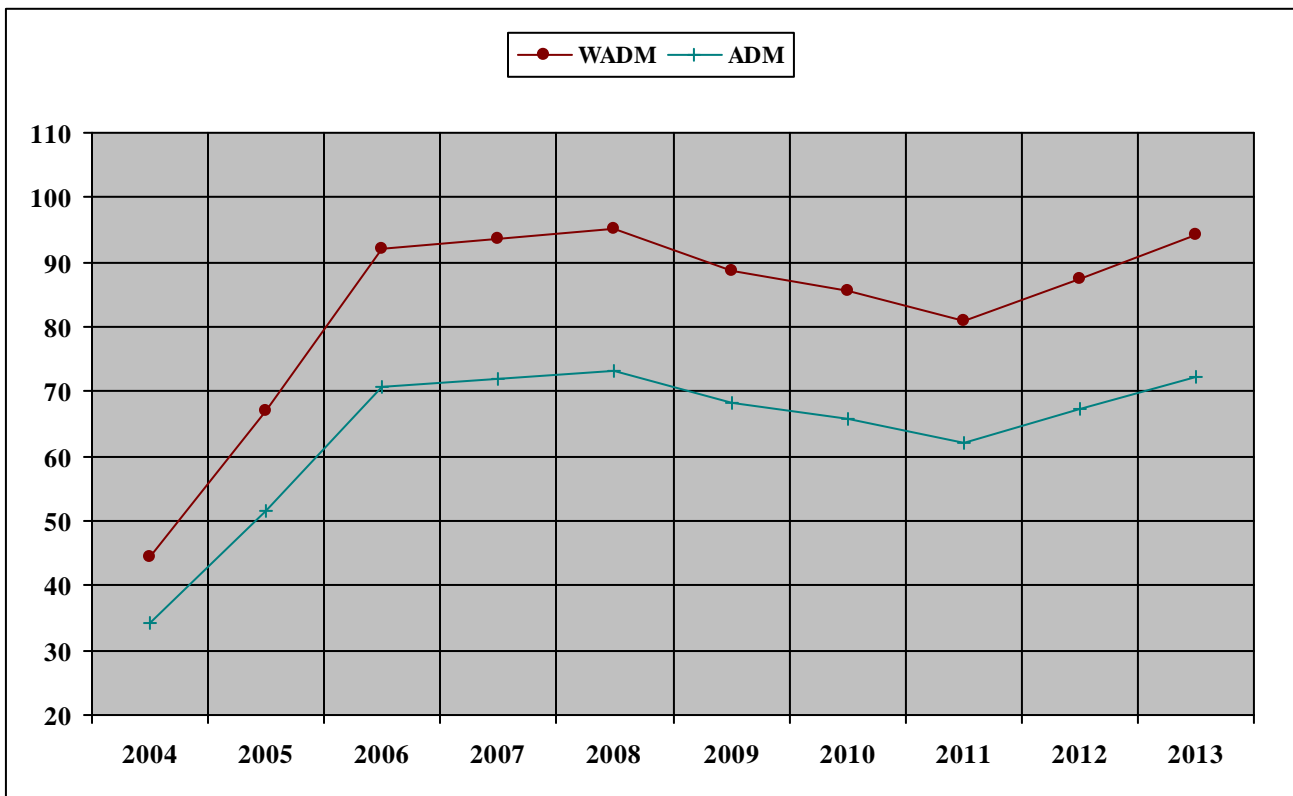
**Operating Lease and Long-Term Commitments**

The School entered into a five year lease agreement during the 2010 school year with JC Properties of Bemidji, LLC for facilities located at 3724 Bemidji Avenue North in Bemidji, Minnesota. For the year ended June 30, 2013 lease payments totaled \$135,785.

**FACTORS BEARING ON THE SCHOOL'S FUTURE**

**Student Enrollment**

All Minnesota school districts including charter schools receive general education aid based upon Average Daily Membership (ADM). The following chart shows the School's ADM over the past ten years.





**VOYAGEURS EXPEDITIONARY HIGH SCHOOL**  
**MINNESOTA CHARTER SCHOOL NO. 4107**  
**BEMIDJI, MINNESOTA**  
**MANAGEMENT'S DISCUSSION AND ANALYSIS**  
**YEAR ENDED JUNE 30, 2013**

**FACTORS BEARING ON THE SCHOOL'S FUTURE (Continued)**

The School began operation in the 2003-2004 School year with only 9<sup>th</sup> and 10<sup>th</sup> graders. In, 2004-2005 the School added 11<sup>th</sup> grade and in 2005-2006 the School added the 12<sup>th</sup> grade. For the 2014 school year the School will be adding the 7<sup>th</sup> and 8<sup>th</sup> grades.

**Political Environment**

The political environment at the State level will have a significant effect on future finances. The state legislature sets the amount of revenue from aids and levies that Minnesota school districts will receive. Currently the general education basic allowance, from which the School receives the single largest state aid, is set at \$5,224 per pupil unit and will increase to \$5,302 in fiscal year 2014.

**Labor Force**

Voyageurs Expeditionary High School negotiates contracts on an annual basis. Salaries and benefits accounted for 59% of the School's general fund expenditures for fiscal year 2013.

**CONTACTING THE SCHOOL'S FINANCIAL MANAGEMENT**

This financial report is designed to provide the School's citizens, customers, and creditors with a general overview of the School's finances and to demonstrate the School's accountability for the money it receives. If you have any questions about this report or would like additional information, contact Rita Poulton, Business Manager, at the School's office at 3724 Bemidji Avenue North, Bemidji, Minnesota 56601.

**VOYAGEURS EXPEDITIONARY HIGH SCHOOL**  
**MINNESOTA CHARTER SCHOOL NO. 4107**  
**BEMIDJI, MINNESOTA**  
**STATEMENT OF NET POSITION**  
**JUNE 30, 2013**

**ASSETS**

Cash and Cash Equivalents		\$ 124,576
Due from Other Governmental Units		190,916
Other Accounts Receivable		848
Prepaid Expenditures		14,497
Capital Assets:		
Equipment	\$ 125,724	
Less Accumulated Depreciation	(60,613)	
Total Capital Assets, Net of Depreciation		<u>65,111</u>
 Total Assets		 <u>395,948</u>

**LIABILITIES**

Salaries Payable		22,962
Accounts Payable		10,500
Payroll Deductions and Employer Contributions		<u>12,953</u>
 Total Liabilities		 <u>46,415</u>

**NET POSITION**

Net Investment in Capital Assets		65,111
Restricted for State Mandated Purposes		1,069
Unrestricted		<u>283,353</u>
 Total Net Position		 <u>\$ 349,533</u>

See Accompanying Notes to Financial Statements.

**VOYAGEURS EXPEDITIONARY HIGH SCHOOL**  
**MINNESOTA CHARTER SCHOOL NO. 4107**  
**BEMIDJI, MINNESOTA**  
**STATEMENT OF ACTIVITIES**  
**YEAR ENDED JUNE 30, 2013**

<b><u>Functions/Programs</u></b>	<b><u>Expenses</u></b>	<b><u>Program Revenues</u></b>		<b><u>Net (Expense) Revenue and Changes in Net Position</u></b>
		<b><u>Charges for Services</u></b>	<b><u>Operating Grants and Contributions</u></b>	
<b>Governmental Activities</b>				
District and School Administration	\$ 81,378	\$ 11,487	\$ -	\$ (69,891)
District Support Services	106,227	-	-	(106,227)
Regular Instruction	446,028	-	196,749	(249,279)
Exceptional Instruction	151,575	-	161,682	10,107
Instructional Support Services	16,128	-	-	(16,128)
Pupil Support Services	53,838	2,366	41,848	(9,624)
Site, Buildings and Equipment	177,920	-	113,364	(64,556)
Fiscal and Other Fixed Costs	11,657	-	-	(11,657)
<b>Total Governmental Activities</b>	<b>\$ 1,044,751</b>	<b>\$ 13,853</b>	<b>\$ 513,643</b>	<b>(517,255)</b>
<b><u>General Revenues:</u></b>				
				543,929
Aids and Payments from State Sources				88
Investment Earnings				766
Miscellaneous Revenues				
<b><u>Total General Revenues</u></b>				<b>544,783</b>
<b><u>Change in Net Position</u></b>				<b>27,528</b>
<b><u>Net Position - Beginning of Year</u></b>				<b>322,005</b>
<b><u>Net Position - End of Year</u></b>				<b>\$ 349,533</b>

See Accompanying Notes to Financial Statements.

**VOYAGEURS EXPEDITIONARY HIGH SCHOOL**  
**MINNESOTA CHARTER SCHOOL NO. 4107**  
**BEMIDJI, MINNESOTA**  
**BALANCE SHEET - GOVERNMENTAL FUNDS**  
**JUNE 30, 2013**

	<b>General Fund</b>	<b>Other Governmental Fund</b>	<b>Totals</b>
<b><u>ASSETS</u></b>			
Cash and Cash Equivalents	\$ 124,576	\$ -	\$ 124,576
Due from Other Governmental Units	190,051	865	190,916
Other Accounts Receivable	394	454	848
Prepaid Expenditures	14,497	-	14,497
	<hr/>	<hr/>	<hr/>
<b><u>Total Assets</u></b>	<b><u>\$ 329,518</u></b>	<b><u>\$ 1,319</u></b>	<b><u>\$ 330,837</u></b>
 <b><u>LIABILITIES AND FUND EQUITY</u></b>			
<b><u>Liabilities</u></b>			
Salaries Payable	22,962	-	22,962
Accounts Payable	10,250	250	10,500
Payroll Deductions and Employer Contributions	12,953	-	12,953
Total Liabilities	46,165	250	46,415
	<hr/>	<hr/>	<hr/>
<b><u>Fund Equity</u></b>			
Nonspendable for Prepaid Expenditures	14,497	-	14,497
Restricted for Food Service	-	1,069	1,069
Unassigned	268,856	-	268,856
Total Fund Equity	283,353	1,069	284,422
	<hr/>	<hr/>	<hr/>
<b><u>Total Liabilities and Fund Equity</u></b>	<b><u>\$ 329,518</u></b>	<b><u>\$ 1,319</u></b>	<b><u>\$ 330,837</u></b>

See Accompanying Notes to Financial Statements.

**VOYAGEURS EXPEDITIONARY HIGH SCHOOL**  
**MINNESOTA CHARTER SCHOOL NO. 4107**  
**BEMIDJI, MINNESOTA**  
**RECONCILIATION OF THE BALANCE SHEET -**  
**GOVERNMENTAL FUNDS TO THE STATEMENT OF NET POSITION**  
**JUNE 30, 2013**

**Total Fund Balances - Governmental Funds** **\$ 284,422**

Amounts reported for governmental activities in the statement of net position are different because:

Capital assets used in governmental activities are not financial resources and therefore are not reported as assets in the governmental funds.

Cost	\$ 125,724	
Accumulated Depreciation	(60,613)	
Net Depreciated Value of Capital Assets	<u>65,111</u>	<u>65,111</u>

**Total Net Position - Governmental Activities** **\$ 349,533**

**VOYAGEURS EXPEDITIONARY HIGH SCHOOL**  
**MINNESOTA CHARTER SCHOOL NO. 4107**  
**BEMIDJI, MINNESOTA**  
**STATEMENT OF REVENUES, EXPENDITURES, AND**  
**CHANGES IN FUND BALANCES - GOVERNMENTAL FUNDS**  
**YEAR ENDED JUNE 30, 2013**

	General Fund	Other Governmental Fund	Totals
<b><u>Revenues</u></b>			
Revenues from Local Sources	\$ 12,253	\$ -	\$ 12,253
Revenues from State Sources	985,142	1,826	986,968
Revenues from Federal Sources	30,582	40,022	70,604
Sales and Other Conversions of Assets	-	2,366	2,366
Investment Earnings	88	-	88
<b>Total Revenues</b>	<b>1,028,065</b>	<b>44,214</b>	<b>1,072,279</b>
<b><u>Expenditures</u></b>			
District and School Administration	78,512	-	78,512
District Support Services	106,227	-	106,227
Regular Instruction	446,389	-	446,389
Exceptional Instruction	147,513	-	147,513
Instructional Support Services	16,128	-	16,128
Pupil Support Services	17,459	45,573	63,032
Site, Buildings, and Equipment	168,949	-	168,949
Fiscal and Other Fixed Costs	11,657	-	11,657
<b>Total Expenditures</b>	<b>992,834</b>	<b>45,573</b>	<b>1,038,407</b>
<b><u>Excess of Revenues Over (Under) Expenditures</u></b>	<b>35,231</b>	<b>(1,359)</b>	<b>33,872</b>
<b><u>Other Financing Sources (Uses)</u></b>			
Operating Transfers In	-	2,323	2,323
Operating Transfers Out	(2,323)	-	(2,323)
<b>Total Other Financing Sources (Uses)</b>	<b>(2,323)</b>	<b>2,323</b>	<b>-</b>
<b><u>Excess of Revenues and Other Financing Sources Over (Under) Expenditures and Other Financing Uses</u></b>	<b>32,908</b>	<b>964</b>	<b>33,872</b>
<b><u>Fund Balances, Beginning of Year</u></b>	<b>250,445</b>	<b>105</b>	<b>250,550</b>
<b><u>Fund Balances, End of Year</u></b>	<b>\$ 283,353</b>	<b>\$ 1,069</b>	<b>\$ 284,422</b>

See Accompanying Notes to Financial Statements.

**VOYAGEURS EXPEDITIONARY HIGH SCHOOL**  
**MINNESOTA CHARTER SCHOOL NO. 4107**  
**BEMIDJI, MINNESOTA**  
**RECONCILIATION OF THE STATEMENT OF REVENUES, EXPENDITURES,**  
**AND CHANGES IN FUND BALANCES - GOVERNMENTAL FUNDS**  
**TO THE STATEMENT OF ACTIVITIES**  
**YEAR ENDED JUNE 30, 2013**

Net Change in Fund Balances - Total Governmental Funds		\$ 33,872
Amounts reported for governmental activities in the statement of activities are different because:		
Capital outlays are reported as expenditures in governmental funds. However, in the statement of activities the cost of those assets is allocated over their estimated useful lives as depreciation expense.		
Capital Outlay	\$ 18,114	
Depreciation	<u>(19,259)</u>	
Excess Depreciation Expense Over Capital Outlay		(1,145)
Disposal of fixed assets are only reported in the governmental funds when cash is received from the sale. In the statement of activities, a gain or loss is reported for each disposal.		
		<u>(5,199)</u>
Change in Net Position of Government Activities		<u><u>\$ 27,528</u></u>

See Accompanying Notes to Financial Statements.

**VOYAGEURS EXPEDITIONARY HIGH SCHOOL**  
**MINNESOTA CHARTER SCHOOL NO. 4107**  
**BEMIDJI, MINNESOTA**  
**NOTES TO FINANCIAL STATEMENTS**  
**YEAR ENDED JUNE 30, 2013**

**NOTE 1 – Summary of Significant Accounting Policies**

The financial statements of Voyageurs Expeditionary High School, Minnesota Charter School No. 4107 (School) have been prepared in conformity with accounting principles generally accepted in the United States of America (GAAP) as applied to governmental units. The Governmental Accounting Standards Board (GASB) is the accepted standard setting body for establishing governmental accounting and financial reporting principles. The GASB has issued codification of governmental accounting and financial reporting standards dated June 30, 2013. This codification and subsequent GASB pronouncements are recognized as accounting principles generally accepted in the United States of America for state and local government.

**A. Organization**

Voyageurs Expeditionary High School is organized for the specific purpose of establishing and operating a results-oriented Charter School pursuant to Minnesota Statutes Chapter 124D.10. On June 23, 2003 the Commissioner of Education, declared Voyageurs Expeditionary High School as charter school No. 4107, effective July 1, 2003. The Audubon Center of the North Woods, Sandstone, Minnesota, is the approved authorizer for the Voyageurs Expeditionary High School in Bemidji, Minnesota and the two parties have signed an authorization agreement through June 30, 2014.

Voyageurs Expeditionary High School was organized on January 27, 2003, as a non-profit corporation under Minnesota Statutes, Chapter 317A and on September 4, 2003 was determined to be tax exempt under Internal Revenue Code 501(c)(3).

**B. Reporting Entity**

The School (primary government) through its contract with its authorizer, the Audubon Center of the North Woods, has the financial accountability and control over all activities related to education of students attending the School. It does not have the same authority as public schools in Minnesota because it does not have authority to levy taxes and is limited to the number of students it may enroll. However, by the Contract, the management, care, and control of the School are vested in a Board of Directors, known as the Board of Education (Board). The School receives funding from state, and federal government sources and must comply with the concomitant requirements of these funding source entities. The School is not included in any other organization's "reporting entity" as defined by GASB Statement 14 since Board members are to be elected by the teachers, parents and students and have decision making authority, the power to designate management, the ability to significantly influence operations and primary accountability for fiscal matters.

Student activities are determined primarily by student participants under the guidance of an adult and are generally conducted outside of school hours. The School Board does have a fiduciary responsibility in establishing broad policies and ensuring that appropriate financial records are maintained for student activities. However, in accordance with Minnesota Statutes, the School Board has elected to control and exercise oversight responsibility with respect to the underlying student activities.



**VOYAGEURS EXPEDITIONARY HIGH SCHOOL**  
**MINNESOTA CHARTER SCHOOL NO. 4107**  
**BEMIDJI, MINNESOTA**  
**NOTES TO FINANCIAL STATEMENTS**  
**YEAR ENDED JUNE 30, 2013**

**NOTE 1 – Summary of Significant Accounting Policies – Continued**

**C. Financial Statement Presentation**

The school-wide financial statements (i.e. the statement of net position and the statement of activities) display information about the reporting entity as a whole. These statements include all the financial activities of the School.

The statement of activities demonstrates the degree to which the direct expenses of a given function or segment is offset by program revenues. Direct expenses are those that are clearly identifiable with a specific function or segment. The School does not allocate indirect expenses. Program revenues, include charges to customers or applicants who purchase, use, or directly benefit from goods, services, or privileges provided by a given function or capital requirements of a particular function or segment. Operating grants include operating-specific and discretionary grants while capital grants include only capital-specific grants. Other items not properly included among program revenues are reported instead as general revenues.

The School applies restricted resources first when an expense is incurred for purposes for which both restricted and unrestricted net position is available. Depreciation expense that can be specifically identified by function is included in the direct expenses of each function.

Except for operating transfers between funds, as a general rule the School does not engage in inter-fund activities. However, in the school-wide financial statements operating transfers between governmental funds are eliminated.

Separate fund financial statements are provided for governmental funds and fiduciary funds, even though the latter are excluded from the school-wide financial statements. All individual governmental funds are reported in separate columns in the fund financial statements.

Proprietary funds are used to report business-type activities carried on by a school district. No activities of the School were determined to be of this nature, so no proprietary funds are present in the financial statements.

**D. Measurement Focus and Basis of Accounting**

The accounting and financial reporting treatment applied is determined by its measurement focus and basis of accounting. The school-wide financial statements are reported using the economic resources measurement focus and the accrual basis of accounting. Revenues are recorded when earned and expenses are recorded when a liability is incurred, regardless of the timing or related cash flows.

Governmental fund financial statements are reported using the current financial resources measurement focus and the modified accrual basis of accounting. The modified accrual basis of accounting recognizes expenses when incurred, except principal and interest on general long-term debt which is recognized when due, and revenue under the following principle:

**VOYAGEURS EXPEDITIONARY HIGH SCHOOL**  
**MINNESOTA CHARTER SCHOOL NO. 4107**  
**BEMIDJI, MINNESOTA**  
**NOTES TO FINANCIAL STATEMENTS**  
**YEAR ENDED JUNE 30, 2013**

**NOTE 1 – Summary of Significant Accounting Policies – Continued**

- State and Federal grants and aids are recorded as revenue in the fiscal year for which the aids are designated by statute or contract.

Other revenues are recognized when susceptible to accrual, i.e., when they become both measurable and available. “Measurable” means the amount of the transaction can be determined and “available” means collectible within the current period or soon enough thereafter to be used to pay liabilities of the current period.

**Description of Funds**

The existence of the various School funds has been established by the Minnesota Department of Education, and is accounted for as an independent entity. The operations of each fund are accounted for with a separate set of self-balancing accounts that comprise its assets, liabilities, fund equity, revenues and expenditures.

GASB Statement No. 34 specifies that the accounts and activities of each of the School’s most significant governmental funds (termed “major funds”) be reported in separate columns on the fund financial statements. Other non-major funds can be reported in total.

Descriptions of the funds in this report are as follows:

**Governmental Funds**

**General Fund** – Accounts for all financial resources and transactions relating to the administration, instruction, pupil transportation, and maintenance of the School, which are not accounted for in other school funds.

Additionally, the School reports the following non-major fund:

**Special Revenue Fund** – Accounts for the proceeds of specific revenue sources (other than expendable trust and major capital projects) that are legally restricted to expenditures for specified purposes. The School’s special revenue fund and its purpose are as follows:

**Food Service Special Revenue Fund** – Accounts for all activities associated with the preparation and serving of regular and incidental meals, lunches or snacks in connection with school activities.

**E. Assets, Liabilities, Net Position and Fund Balances**

**Cash and Cash Equivalents** – Cash balances for all funds are maintained on a combined basis and invested, to the extent possible, in allowable investments.

**VOYAGEURS EXPEDITIONARY HIGH SCHOOL**  
**MINNESOTA CHARTER SCHOOL NO. 4107**  
**BEMIDJI, MINNESOTA**  
**NOTES TO FINANCIAL STATEMENTS**  
**YEAR ENDED JUNE 30, 2013**

**NOTE 1 – Summary of Significant Accounting Policies – Continued**

**Due From Other Governmental Units** – Amounts due from other governmental units consist of amounts primarily due from the other Minnesota school districts, the Minnesota Department of Education and from the Federal Government through the Minnesota Department of Education for state and federal aids and grants under various specific programs. The receivable accounts are reported at estimated amounts based on available information at the date of the report. Adjustments and prorations may be made by the applicable agencies based on the amount of funds available for distribution and may result in differing amounts actually being received. The differences between the receivable recorded and the actual amount received will be recognized as a revenue adjustment in the subsequent year.

**Prepaid Expenditures** – Certain payments to vendors reflect costs applicable to future accounting periods and are recorded as prepaid expenditures. Prepaid expenditures are recorded as expenditures at the time of consumption.

**Capital Assets** – Capital assets are capitalized at historical cost. Donated assets are recorded as capital assets at estimated fair market value at the date of donation. The School maintains a threshold level of \$500 or more for capitalizing capital assets.

Capital assets are recorded in the school-wide financial statements, but are not reported in the fund financial statements. Capital assets are depreciated using the straight-line method over their estimated useful lives. Since surplus assets are sold for an immaterial amount when declared as no longer needed for public school purpose by the School, no salvage value is taken into consideration for depreciation purposes. Useful lives are 5 years for leasehold improvements and 5 to 15 years for equipment.

Capital assets not being depreciated include land and construction in progress, if any.

**Net Position** – Net position represent the difference between assets and liabilities in the school-wide financial statements. Net investment in capital assets consists of capital assets, net of accumulated depreciation, reduced by the outstanding balance of any long-term debt used to build or acquire the capital assets. Net position is reported as restricted in the school-wide financial statements when there are limitations imposed on its use through external restrictions imposed by creditors, grantors, or laws or regulations of other governments.

**Fund Equity** – The School classifies fund balances in the governmental funds as follows:

- **Nonspendable fund balance** — amounts that are not in spendable form (such as inventory or prepaid items) or are required to be maintained intact.
- **Restricted fund balance** — amounts constrained to specific purposes by their providers (such as grantors, bondholders, and higher levels of government), through constitutional provisions, or by enabling legislation.

**VOYAGEURS EXPEDITIONARY HIGH SCHOOL**  
**MINNESOTA CHARTER SCHOOL NO. 4107**  
**BEMIDJI, MINNESOTA**  
**NOTES TO FINANCIAL STATEMENTS**  
**YEAR ENDED JUNE 30, 2013**

**NOTE 1 – Summary of Significant Accounting Policies – Continued**

- **Committed fund balance** — amounts constrained to specific purposes by the School itself, using its highest level of decision making authority (i.e. School Board). To be reported as committed, amounts cannot be used for any purpose unless the School takes the same highest level action to remove or change the constraints.
- **Assigned fund balance** — amounts the School intends to use for a specific purpose. Intent can be expressed by the School Board or by an official or body to which the School Board delegates the authority.
- **Unassigned fund balance** — amounts that are available for any purpose. Positive amounts are reported only in the general fund.

Committed, assigned and restricted funds are used first when an expense is incurred for purposes for which committed, assigned or restricted and unrestricted funds are available. As of June 30, 2013 the School has no committed or assigned fund balances.

In the general fund, the School strives to maintain an unassigned fund balance to be used for unanticipated emergencies of approximately 30% of the actual GAAP basis expenditures and other financing sources and uses. At June 30, 2013 the School's unassigned fund balance was at 27.1% of current year general fund expenditures.

**F. Compensated Absences**

Employees are allowed eight days of paid leave per year, and administrative employees are allowed twelve days of personal time-off per year. Employees are paid for the amount of leave days remaining at year-end. All employees received payment for unused leave before June 30, 2013.

**G. Use of Estimates**

The preparation of financial statements in conformity with accounting principles generally accepted in the United States of America requires management to make estimates and assumptions that affect the reported amounts of assets and liabilities and disclosure of contingent assets and liabilities at the date of the financial statements and the reported amounts of revenues and expenses during the reporting period. Actual results could differ from those estimates.

**VOYAGEURS EXPEDITIONARY HIGH SCHOOL**  
**MINNESOTA CHARTER SCHOOL NO. 4107**  
**BEMIDJI, MINNESOTA**  
**NOTES TO FINANCIAL STATEMENTS**  
**YEAR ENDED JUNE 30, 2013**

**NOTE 2 – Stewardship, Compliance, and Accountability**

**Excess of Expenditures Over Budget**

Actual expenditures exceeded budget for the period ended June 30, 2013 in the following fund:

	Budget	Actual	Variance
General Fund	\$ 970,288	\$ 992,834	\$ 22,546

The above overage was considered, by School Management to be the result of necessary expenditures critical to operations and was approved by the School Board.

**NOTE 3 – Deposits and Investments**

**A. Deposits**

**Authority** – In accordance with Minnesota Statutes, the School maintains deposits at those depository banks authorized by the Board. All such depositories are members of the Federal Reserve System. Minnesota Statutes require that all School deposits be protected by insurance, surety bond or collateral. The market value of collateral pledged must equal 110% of the deposits not covered by insurance or bonds. Authorized collateral includes treasury bills, notes and bonds; issues of U.S. Government agencies; general obligations rated “A” or better, revenue obligations rated “AA” or better; irrevocable standard letters of credit issued by the Federal Home Loan Bank; and certificates of deposit. Minnesota Statutes require that securities pledged as collateral be held in safekeeping in a restricted account at the Federal Reserve Bank or in an account at a trust department of a commercial bank or other financial institution not owned or controlled by the financial institution furnishing the collateral.

**Custodial Credit Risk** – The custodial credit risk for deposits is the risk that in the event of a bank failure, the School’s deposits may not be recovered. The School’s policy for custodial credit risk is to maintain compliance with Minnesota statutes that require all the School’s deposits to be protected by insurance, surety bond, or pledged collateral. The School has no custodial credit risk at June 30, 2013.

**B. Investments**

**Authority** - Minnesota Statutes authorize the School to invest in the following types of investments:

1. securities which are direct obligations or are guaranteed or insured issues of the United States, its agencies, its instrumentalities, or organizations created by an act of congress, except mortgage-backed securities defined as “high risk” by Minnesota Statutes;
2. mutual funds through shares of registered investment companies provided the mutual fund receives certain ratings depending on its investments;
3. general obligations of the State of Minnesota and its municipalities, and in certain state agency and local obligations of Minnesota and other states provided such obligations have certain specified bond ratings by a national bond rating service;

**VOYAGEURS EXPEDITIONARY HIGH SCHOOL**  
**MINNESOTA CHARTER SCHOOL NO. 4107**  
**BEMIDJI, MINNESOTA**  
**NOTES TO FINANCIAL STATEMENTS**  
**YEAR ENDED JUNE 30, 2013**

**NOTE 3 – Deposits and Investments - Continued**

4. bankers' acceptances of United States banks;
5. commercial paper issued by United States corporations or their Canadian subsidiaries that is rated in the highest quality category by two nationally recognized rating agencies and matures in 270 days or less; and
6. with certain restrictions, in repurchase agreements, securities lending agreements, joint powers investment trusts, and guaranteed investment contracts.

The School has not adopted a formal investment policy. At June 30, 2013, the School had no investments.

**NOTE 4 – Due From Other Governmental Units**

Amounts due from other governmental units at June 30, 2013 are as follows:

	<u>General Fund</u>	<u>Other Funds</u>	<u>Totals</u>
<b>Minnesota Department of Education:</b>			
State Aids and Grants	\$ 174,748	\$ 865	\$ 175,613
Federal Aids and Grants	15,303	-	15,303
<b>Total</b>	<u><u>\$ 190,051</u></u>	<u><u>\$ 865</u></u>	<u><u>\$ 190,916</u></u>

**NOTE 5 – Capital Assets**

Capital asset activity for the year ended June 30, 2013 is as follows:

	<u>Beginning Balance</u>	<u>Additions</u>	<u>Sales and Retirements</u>	<u>Ending Balance</u>
Equipment	\$ 111,811	\$ 18,114	\$ 44,121	\$ 85,804
Leasehold Improvements	39,920	-	-	39,920
<b>Total Capital Assets</b>	151,731	18,114	44,121	125,724
 Less: Accumulated Depreciation	 80,276	 19,259	 38,922	 60,613
<b>Capital Assets, Net of Depreciation</b>	<u><u>\$ 71,455</u></u>	<u><u>\$ (1,145)</u></u>	<u><u>\$ 5,199</u></u>	<u><u>\$ 65,111</u></u>

**VOYAGEURS EXPEDITIONARY HIGH SCHOOL**  
**MINNESOTA CHARTER SCHOOL NO. 4107**  
**BEMIDJI, MINNESOTA**  
**NOTES TO FINANCIAL STATEMENTS**  
**YEAR ENDED JUNE 30, 2013**

**NOTE 5 – Capital Assets - Continued**

Depreciation expense was charged to the following program services:

Administration	\$ 2,167
Regular Instruction	6,367
Exceptional Instruction	650
Pupil Support Services	1,590
Operations	<u>8,485</u>
Total Depreciation Expense	<u>\$ 19,259</u>

**NOTE 6 – Pension Plans**

**A. Teachers Retirement Association**

**Plan Description**

All teachers employed by the School are covered by defined benefit plans administered by the Teachers Retirement Association (TRA). TRA members belong to either the Coordinated or the Basic Plan. Coordinated Plan members are covered by Social Security and Basic Plan members are not. All new members must participate in the Coordinated Plan. The Plans are established and administered in accordance with Minnesota Statutes, Chapters 354 and 356.

TRA provides retirement benefits as well as disability benefits to members, and benefits to survivors upon death of eligible members. Benefits are established by Minnesota Statute, and vest after three years of service credit. The defined retirement benefits are based on a member's highest average salary for any five consecutive years of allowable service, age, and years of credit at termination of service.

Two methods are used to compute benefits for TRA's Coordinated and Basic Plan members. Members first employed before July 1, 1989 receive the greater of the Tier I or Tier II as described:

**Tier I:**

<u>Step Rate Formula</u>	<u>Coordinated</u>	<u>Basic</u>
1st ten years prior to July 1, 2006	1.2 percent per year	2.2 percent per year
1st ten years on or after July 1, 2006	1.4 percent per year	2.2 percent per year
All other years prior to July 1, 2006	1.7 percent per year	2.7 percent per year
All other years on or after July 1, 2006	1.9 percent per year	2.7 percent per year

With these provisions:

- a) Normal retirement age is 65 with less than 30 years of allowable service and age 62 with 30 or more years of allowable service.
- b) 3 percent per year early retirement reduction factors for all years under normal retirement age.

**VOYAGEURS EXPEDITIONARY HIGH SCHOOL**  
**MINNESOTA CHARTER SCHOOL NO. 4107**  
**BEMIDJI, MINNESOTA**  
**NOTES TO FINANCIAL STATEMENTS**  
**YEAR ENDED JUNE 30, 2013**

**NOTE 6 – Pension Plans - Continued**

- c) **Unreduced benefits for early retirement under a Rule-of-90 (age plus allowable service equals 90 or more).**

**Tier II:**

For years of service prior to July 1, 2006, a level formula of 1.7 percent per year for coordinated members and 2.7 percent per year for basic members. For years of service July 1, 2006 and after, a level formula of 1.9 percent per year for Coordinated members and 2.7 for Basic members applies. Actuarially equivalent early retirement reduction factors with augmentation are used for early retirement before the normal age of 65. These reduction factors average approximately 4 to 5.5 percent per year.

Members first employed after June 30, 1989 receive only the Tier II calculation with a normal retirement age that is their retirement age for full Social Security retirement benefits, but not to exceed age 66.

Six different types of annuities are available to members upon retirement. The No Refund Life Plan (A-1) is a lifetime annuity that ceases upon death of the retiree - no survivor annuity is payable. A retiring member may also choose to provide survivor benefits to a designated beneficiary(ies) by selecting one of the five plans which have survivorship features. Vested members may also leave their contributions in the TRA Fund upon termination of service in order to qualify for a deferred annuity at retirement age. Any member terminating service is also eligible for a refund of their employee contributions plus interest.

The benefit provisions stated apply to active plan participants. Vested, terminated employees who are entitled to benefits but not yet receiving them are bound by the provisions in effect at the time they last terminated their public service.

TRA publicly issues a Comprehensive Annual Financial Report (CAFR) presenting financial statements, supplemental information on funding levels, investment performance, and further information on benefit provisions. The report may be accessed at the TRA website [www.minnesotatra.org](http://www.minnesotatra.org). Alternatively, a copy of the report may be obtained by writing or calling TRA:

**Teachers Retirement Association**  
**60 Empire Drive Suite 400**  
**St Paul MN 55103-1855**  
**651-296-2409**  
**800-657-3669**



**VOYAGEURS EXPEDITIONARY HIGH SCHOOL**  
**MINNESOTA CHARTER SCHOOL NO. 4107**  
**BEMIDJI, MINNESOTA**  
**NOTES TO FINANCIAL STATEMENTS**  
**YEAR ENDED JUNE 30, 2013**

**NOTE 6 – Pension Plans - Continued**

**Funding Policy**

Minnesota Statutes Chapter 354 sets the rates for employer and employee contributions. These statutes are established and amended by the state legislature. Coordinated and Basic Plan members are required to contribute 6.5 percent and 10.0 percent, respectively, of their annual covered salary during fiscal year 2013 as employee contributions. The TRA employer contribution rates are 6.5 percent for Coordinated members and 10.5 percent for Basic members during fiscal year 2013. Total covered payroll salaries for all TRA members statewide during the fiscal year ended June 30, 2012 was approximately \$3.87 billion. TRA covered payroll for all members statewide for fiscal years ended June 30, 2011 and June 30, 2010 were \$3.84 billion and \$3.79 billion.

The School's contributions for the years ending June 30, 2013, 2012, and 2011 were \$21,309, \$20,994, and \$15,542, respectively, equal to the required contributions for each year as set by state statute.

The 2010 Legislature approved employee and employer contribution rate increases to be phased-in over a four-year period beginning July 1, 2011. Employee and employer contribution rates will rise 0.5 percent each year of the four-year period. Beginning July 1, 2014, TRA Coordinated employee and employer contribution rates will each be 7.5 percent.

**B. Public Employees Retirement Association**

**Plan Description**

All full-time and certain part-time non-certified teacher employees of the School are covered by defined benefit plans administered by the Public Employees Retirement Association of Minnesota (PERA). PERA administers the General Employees Retirement Fund (GERF) that is a cost-sharing, multiple-employer retirement plan. The plan is established and administered in accordance with Minnesota Statutes, Chapters 353 and 356.

GERF members belong to either the Coordinated Plan or the Basic Plan. Coordinated Plan members are covered by Social Security and Basic Plan members are not. All new members must participate in the Coordinated Plan.

PERA provides retirement benefits as well as disability benefits to members, and benefits to survivors upon death of eligible members. Benefits are established by state statute, and vest after three years of credited service. The defined retirement benefits are based on a member's highest average salary for any five successive years of allowable service, age, and years of credit at termination of service.

**VOYAGEURS EXPEDITIONARY HIGH SCHOOL**  
**MINNESOTA CHARTER SCHOOL NO. 4107**  
**BEMIDJI, MINNESOTA**  
**NOTES TO FINANCIAL STATEMENTS**  
**YEAR ENDED JUNE 30, 2013**

**NOTE 6 – Pension Plans – Continued**

Two methods are used to compute benefits for PERA's Coordinated and Basic Plan members. The retiring member receives the higher of a step-rate benefit accrual formula (Method 1) or a level accrual formula (Method 2). Under Method 1, the annuity accrual rate for a Basic Plan member is 2.2 percent of average salary for each of the first 10 years of service and 2.7 percent for each remaining year. The annuity accrual rate for a Coordinated Plan member is 1.2 percent of average salary for each of the first 10 years and 1.7 percent for each remaining year. Under Method 2, the annuity accrual rate is 2.7 percent of average salary for Basic Plan members and 1.7 percent for Coordinated Plan members for each year of service. For GERP members hired prior to July 1, 1989, whose annuity is calculated using Method 1, a full annuity is available when age plus years of service equal 90. Normal retirement age is 65 for Basic and Coordinated members hired prior to July 1, 1989. Normal retirement age is the age for unreduced Social Security benefits capped at age 66 for Coordinated members hired on or after July 1, 1989. A reduced retirement annuity is also available to eligible members seeking early retirement.

There are different types of annuities available to members upon retirement. A single-life annuity is a lifetime annuity that ceases upon the death of the retiree - no survivor annuity is payable. There are also various types of joint and survivor annuity options available which will be payable over joint lives. Members may also leave their contributions in the fund upon termination of public service in order to qualify for a deferred annuity at retirement age. Refunds of contributions are available at any time to members who leave public service, but before retirement benefits begin.

The benefit provisions stated in the previous paragraphs of this section are current provisions and apply to active plan participants. Vested, terminated employees who are entitled to benefits but are not receiving them yet are bound by the provisions in effect at the time they last terminated their public service.

PERA issues a publicly available financial report that includes financial statements and required supplementary information for GERP. That report may be obtained on the Internet at [www.mnpera.org](http://www.mnpera.org), by writing to PERA at 60 Empire Drive #200, St. Paul, Minnesota 55103-2088 or by calling (651) 296-7460 or 1-800-652-9026.

**Funding Policy**

*Minnesota Statutes* Chapter 353 sets the rates for employer and employee contributions. These contributions are established and amended by the state legislature. The School makes annual contributions to the pension plans equal to the amount required by state statutes. GERP Basic Plan members and Coordinated Plan members were required to contribute 9.10% and 6.25%, respectively, of their annual covered salary. The School was required to contribute the following percentages of annual covered payroll: 11.78% for Basic Plan members and 7.25% for Coordinated Plan members.

The School's contributions to the Public Employees Retirement Fund for the years ending June 30, 2013, 2012, and 2011 were \$10,026, \$7,736, and \$9,728, respectively. The School's contributions were equal to the contractually required contributions for each year as set by State Statute.

**VOYAGEURS EXPEDITIONARY HIGH SCHOOL**  
**MINNESOTA CHARTER SCHOOL NO. 4107**  
**BEMIDJI, MINNESOTA**  
**NOTES TO FINANCIAL STATEMENTS**  
**YEAR ENDED JUNE 30, 2013**

**NOTE 7 – Short-Term Indebtedness, Line of Credit**

The School had a \$75,000 operating line of credit with RiverWood Bank of Bemidji, Minnesota. The line of credit was secured by all assets of the School and matured on August 17, 2012.

Line of credit activity for the year ended June 30, 2013 is as follows:

<u>Beginning</u>		<u>Payments and</u>	<u>Ending</u>
<u>Balance</u>	<u>Additions</u>	<u>Retirements</u>	<u>Balance</u>
\$ 40,000	\$ -	\$ 40,000	\$ -

**NOTE 8 – Operating Lease**

In May of 2010, the School entered into a five year lease agreement with JC Properties of Bemidji, LLC for facilities located at 3724 Bemidji Avenue North in Bemidji, Minnesota, commencing on September 1, 2010. Actual lease expenditures for the JC Properties of Bemidji, LLC lease for the year ended June 30, 2013 were \$135,785. Remaining significant terms of the lease are as follows:

2013 - 2014 Fiscal Year	\$139,968
2014 - 2015 Fiscal Year	144,508

**NOTE 9 - Risk Management**

The School is exposed to various risks of loss related to torts; theft of, damage to, or destruction of assets; errors or omissions; injuries to employees; and natural disaster. The School carries various commercial insurance policies covering workers compensation, personal property, commercial liability and automobile liability. There was no significant reduction in insurance from the previous year. The amount of settlements did not exceed insurance coverage for the past three fiscal years.

**NOTE 10 - Commitments and Contingencies**

The School participates in State and Federal grant programs, which are governed by various rules and regulations of the grantor agencies. Costs charged to the respective grant programs are subject to audit and adjustment by the grantor agencies; therefore, to the extent that the School has not complied with the rules and regulations governing the grants, refunds of any money received may be required and the collectability of any related receivable at June 30, 2013 may be impaired. In the opinion of the School, there are no significant contingent liabilities relating to compliance with the rules and regulations governing the respective grants; therefore, no provision has been recorded in the accompanying combined financial statements for such contingencies.

**VOYAGEURS EXPEDITIONARY HIGH SCHOOL**  
**MINNESOTA CHARTER SCHOOL NO. 4107**  
**BEMIDJI, MINNESOTA**  
**GENERAL FUND**  
**BUDGETARY COMPARISON SCHEDULE**  
**YEAR ENDED JUNE 30, 2013**

	<u>Budgeted Amounts</u>		<u>Actual</u>	<u>Variance with</u>
	<u>Original</u>	<u>Final</u>		<u>Final Budget -</u>
				<u>Positive</u>
				<u>(Negative)</u>
<b><u>Revenues</u></b>				
Revenues from Local Sources	\$ 8,000	\$ 11,000	\$ 12,253	\$ 1,253
Revenues from State Sources	958,977	951,788	985,142	33,354
Revenues from Federal Sources	31,100	30,803	30,582	(221)
Investment Earnings	-	-	88	88
<b><u>Total Revenues</u></b>	<b><u>998,077</u></b>	<b><u>993,591</u></b>	<b><u>1,028,065</u></b>	<b><u>34,474</u></b>
<b><u>Expenditures</u></b>				
District and School Administration	78,811	78,701	78,512	189
District Support Services	107,246	100,371	106,227	(5,856)
Regular Instruction	415,613	425,763	446,389	(20,626)
Exceptional Instruction	155,000	148,012	147,513	499
Instructional Support Services	11,500	17,666	16,128	1,538
Pupil Support Services	17,750	17,250	17,459	(209)
Site, Buildings and Equipment	171,079	171,277	168,949	2,328
Fiscal and Other Fixed Costs	11,248	11,248	11,657	(409)
<b><u>Total Expenditures</u></b>	<b><u>968,247</u></b>	<b><u>970,288</u></b>	<b><u>992,834</u></b>	<b><u>(22,546)</u></b>
<b><u>Excess of Revenues Over</u></b>				
<b><u>(Under) Expenditures</u></b>	<b>29,830</b>	<b>23,303</b>	<b>35,231</b>	<b>11,928</b>
<b><u>Other Financing Uses</u></b>				
Operating Transfers Out	-	-	(2,323)	(2,323)
<b><u>Excess of Revenues Over</u></b>				
<b><u>(Under) Expenditures and</u></b>				
<b><u>Other Financing Uses</u></b>	<b>29,830</b>	<b>23,303</b>	<b>32,908</b>	<b>9,605</b>
<b><u>Fund Balances, Beginning of Year</u></b>	<b><u>250,445</u></b>	<b><u>250,445</u></b>	<b><u>250,445</u></b>	<b><u>-</u></b>
<b><u>Fund Balances, End of Year</u></b>	<b><u>\$ 280,275</u></b>	<b><u>\$ 273,748</u></b>	<b><u>\$ 283,353</u></b>	<b><u>\$ 9,605</u></b>

See Accompanying Notes to the Required Supplementary Information.

**VOYAGEURS EXPEDITIONARY HIGH SCHOOL**  
**MINNESOTA CHARTER SCHOOL NO. 4107**  
**BEMIDJI, MINNESOTA**  
**NOTES TO THE REQUIRED SUPPLEMENTARY INFORMATION**  
**YEAR ENDED JUNE 30, 2013**

**NOTE 1 – Budgetary Data**

Budgets are prepared for School funds on the same basis and using the same accounting practices as are used to account and prepare financial reports for the funds. Budgets presented in this report for comparison to actual amounts in accordance with accounting principles generally accepted in the United States of America. Formal budgetary integration is employed as a management control device during the year for the general fund and food service special revenue fund.

**Legal Compliance – Budgets**

- The Executive Director submits to the School Board a proposed operating budget for the fiscal year commencing the following July 1. The operating budget includes proposed expenditures and the means of financing them for all funds of the school. However, the general and special revenue funds are the only funds that are legally adopted through the budgetary process.
- The budget is legally enacted through passage of a School Board resolution by July 1.
- The School Board may authorize transfer of budgeted amounts between funds.
- Formal budgetary integration is employed as a management control device during the year for the general and special revenue funds.
- General and special revenue funds expenditures may not legally exceed budgeted appropriations at the total fund level without School Board approval. Monitoring of budgets is maintained at the expenditure category level.

**NOTE 2 – Expenditures in Excess of Budget**

Actual expenditures exceeded budget for the period ended June 30, 2013 in the following fund:

	Budget	Actual	Variance
General Fund	\$ 970,288	\$ 992,834	\$ 22,546

The above overage was considered by School Management to be the result of necessary expenditures critical to operations and was approved by the School Board.

FISCAL COMPLIANCE REPORT - 6/30/2013  
 District: VOYAGEURS EXPEDITIONARY (4107-07)

	<u>Audit</u>	<u>UFARS</u>	<u>Audit-UFARS</u>		<u>Audit</u>	<u>UFARS</u>	<u>Audit-UFARS</u>
<b>01 GENERAL FUND</b>				<b>06 BUILDING CONSTRUCTION</b>			
Total Revenue	\$1,028,065	\$1,028,066	(\$1)	Total Revenue	\$0	\$0	\$0
Total Expenditures	\$ 992,834	\$992,834	\$0	Total Expenditures	\$0	\$0	\$0
Non Spendable:				Non Spendable			
4.60 Non Spendable Fund Balance	\$14,497	\$14,497	\$0	4.60 Non Spendable Fund Balance	\$0	\$0	\$0
Restricted/Reserved:				Restricted/Reserved:			
4.03 Staff Development	\$0	\$0	\$0	4.07 Capital Projects Levy	\$0	\$0	\$0
4.05 Deferred Maintenance	\$0	\$0	\$0	4.09 Alternative Facility Program	\$0	\$0	\$0
4.06 Health and Safety	\$0	\$0	\$0	4.13 Projects Funded by COP	\$0	\$0	\$0
4.07 Capital Projects Levy	\$0	\$0	\$0	Restricted:			
4.08 Cooperative Revenue	\$0	\$0	\$0	4.64 Restricted Fund Balance	\$0	\$0	\$0
4.14 Operating Debt	\$0	\$0	\$0	Unassigned:			
4.16 Levy Reduction	\$0	\$0	\$0	4.63 Unassigned Fund Balance	\$0	\$0	\$0
4.17 Taconite Building Maint	\$0	\$0	\$0	<b>07 DEBT SERVICE</b>			
4.23 Certain Teacher Programs	\$0	\$0	\$0	Total Revenue	\$0	\$0	\$0
4.24 Operating Capital	\$0	\$0	\$0	Total Expenditures	\$0	\$0	\$0
4.26 \$25 Taconite	\$0	\$0	\$0	Non Spendable			
4.27 Disabled Accessibility	\$0	\$0	\$0	4.60 Non Spendable Fund Balance	\$0	\$0	\$0
4.28 Learning & Development	\$0	\$0	\$0	Restricted/Reserved:			
4.34 Area Learning Center	\$0	\$0	\$0	4.25 Bond Refundings	\$0	\$0	\$0
4.35 Contracted Alt. Programs	\$0	\$0	\$0	4.51 QZAB Payments	\$0	\$0	\$0
4.36 State Approved Alt. Program	\$0	\$0	\$0	Restricted:			
4.38 Gifted & Talented	\$0	\$0	\$0	4.64 Restricted Fund Balance	\$0	\$0	\$0
4.41 Basic Skills Program	\$0	\$0	\$0	Unassigned:			
4.45 Career Tech Programs	\$0	\$0	\$0	4.63 Unassigned Fund Balance	\$0	\$0	\$0
4.49 Safe Schools Levy	\$0	\$0	\$0	<b>08 TRUST</b>			
4.50 Pre-Kindergarten	\$0	\$0	\$0	Total Revenue	\$0	\$0	\$0
4.51 QZAB Payments	\$0	\$0	\$0	Total Expenditures	\$0	\$0	\$0
4.52 OPEB Liab Not In Trust	\$0	\$0	\$0	4.22 Unassigned Fund Balance	\$0	\$0	\$0
4.53 Unfunded Sev & Retiremt Levy	\$0	\$0	\$0	<b>20 INTERNAL SERVICE</b>			
Restricted:				Total Revenue			
4.64 Restricted Fund Balance	\$0	\$0	\$0	Total Expenditures	\$0	\$0	\$0
Committed:				4.22 Unassigned Fund Balance			
4.18 Committed for Separation	\$0	\$0	\$0	<b>25 OPEB REVOCABLE TRUST</b>			
4.61 Committed Fund Balance	\$0	\$0	\$0	Total Revenue	\$0	\$0	\$0
Assigned:				Total Expenditures			
4.62 Assigned Fund Balance	\$0	\$0	\$0	4.22 Unassigned Fund Balance	\$0	\$0	\$0
Unassigned:				<b>45 OPEB IRREVOCABLE TRUST</b>			
4.22 Unassigned Fund Balance	\$268,856	\$268,856	\$0	Total Revenue	\$0	\$0	\$0
<b>02 FOOD SERVICE</b>				Total Expenditures			
Total Revenue	\$44,214	\$44,214	\$0	4.22 Unassigned Fund Balance	\$0	\$0	\$0
Total Expenditures	\$45,573	\$45,573	\$0	<b>47 OPEB DEBT SERVICE</b>			
Non Spendable:				Total Revenue			
4.60 Non Spendable Fund Balance	\$0	\$0	\$0	Total Expenditures	\$0	\$0	\$0
Restricted/Reserved:				Non Spendable:			
4.52 OPEB Liab Not In Trust	\$0	\$0	\$0	4.60 Non Spendable Fund Balance	\$0	\$0	\$0
Restricted:				Restricted:			
4.64 Restricted Fund Balance	\$1,069	\$1,069	\$0	4.25 Bond Refundings	\$0	\$0	\$0
Unassigned:				4.64 Restricted Fund Balance			
4.63 Unassigned Fund Balance	\$0	\$0	\$0	Unassigned:			
<b>04 COMMUNITY SERVICE</b>				4.63 Unassigned Fund Balance			
Total Revenue	\$0	\$0	\$0	\$0	\$0	\$0	\$0
Total Expenditures	\$0	\$0	\$0	<b>02 FOOD SERVICE</b>			
Non Spendable:				Total Revenue			
4.60 Non Spendable Fund Balance	\$0	\$0	\$0	Total Expenditures	\$0	\$0	\$0
Restricted/Reserve:				4.22 Unassigned Fund Balance			
4.26 \$25 Taconite	\$0	\$0	\$0	\$0	\$0	\$0	\$0
4.31 Community Education	\$0	\$0	\$0	<b>47 OPEB DEBT SERVICE</b>			
4.32 E.C.F.E.	\$0	\$0	\$0	Total Revenue	\$0	\$0	\$0
4.44 School Readiness	\$0	\$0	\$0	Total Expenditures	\$0	\$0	\$0
4.47 Adult Basic Education	\$0	\$0	\$0	Non Spendable:			
4.52 OPEB Liab Not In Trust	\$0	\$0	\$0	4.60 Non Spendable Fund Balance	\$0	\$0	\$0
Restricted:				Restricted:			
4.64 Restricted Fund Balance	\$0	\$0	\$0	4.25 Bond Refundings	\$0	\$0	\$0
Unassigned:				4.64 Restricted Fund Balance			
4.63 Unassigned Fund Balance	\$0	\$0	\$0	Unassigned:			



MILLER MCDONALD, INC.  
 Certified Public Accountants  
 513 Beltrami Avenue  
 P.O. Box 486  
 Bemidji, MN 56619  
 (218) 751 - 6300  
 Fax (218) 751 - 0782  
 www.millermcdonald.com

**INDEPENDENT AUDITOR'S REPORT ON COMPLIANCE BASED ON  
 AN AUDIT OF THE FINANCIAL STATEMENTS PERFORMED IN  
 ACCORDANCE WITH THE MINNESOTA LEGAL COMPLIANCE AUDIT  
 GUIDE FOR POLITICAL SUBDIVISIONS**

**The Board of Education  
 Voyageurs Expeditionary High School  
 Minnesota Charter School No. 4107  
 Bemidji, Minnesota**

We have audited, in accordance with auditing standards generally accepted in the United States of America, and the standards applicable to financial audits contained in *Government Auditing Standards*, issued by the Comptroller General of the United States, the financial statements of the governmental activities, each major fund and the aggregate remaining fund information of Voyageurs Expeditionary High School, Minnesota Charter School No. 4107 as of and for the year ended June 30, 2013, and the related notes to the financial statements, and have issued our report thereon dated November 6, 2013.

The *Minnesota Legal Compliance Audit Guide for Political Subdivisions*, promulgated by the State Auditor pursuant to Minnesota Statute 6.65, contains two categories of compliance to be tested in audits of charter schools: uniform financial accounting and reporting standards and charter schools.

In connection with our audit, nothing came to our attention that caused us to believe that Voyageurs Expeditionary High School, Minnesota Charter School No. 4107 failed to comply with the provisions of the *Minnesota Legal Compliance Audit Guide for Political Subdivisions*. However, our audit was not directed primarily toward obtaining knowledge of such noncompliance. Accordingly, had we performed additional procedures, other matters may have come to our attention regarding the School's noncompliance with the above referenced provisions.

The purpose of this report is solely to describe the scope of our testing of compliance and the results of that testing, and not to provide an opinion on compliance. Accordingly, this communication is not suitable for any other purpose.

*Miller McDonald, Inc.*

November 6, 2013  
 Bemidji, Minnesota



MILLER MCDONALD, INC.  
*Certified Public Accountants*  
 513 Beltrami Avenue  
 P.O. Box 486  
 Bemidji, MN 56619  
 (218) 751 - 6300  
 Fax (218) 751 - 0782  
 www.millermcdonald.com

**INDEPENDENT AUDITOR'S REPORT ON INTERNAL CONTROL OVER FINANCIAL  
 REPORTING AND ON COMPLIANCE AND OTHER MATTERS BASED  
 ON AN AUDIT OF FINANCIAL STATEMENTS PERFORMED  
 IN ACCORDANCE WITH GOVERNMENT AUDITING STANDARDS**

**The Board of Education  
 Voyageurs Expeditionary High School  
 Minnesota Charter School No. 4107  
 Bemidji, Minnesota**

We have audited, in accordance with the auditing standards generally accepted in the United States of America and the standards applicable to financial audits contained in *Government Auditing Standards* issued by the Comptroller General of the United States, the financial statements of the governmental activities, each major fund and the aggregate remaining fund information of Voyageurs Expeditionary High School, Minnesota Charter School No. 4107 as of and for the year ended June 30, 2013, and the related notes to the financial statements, which collectively comprise Voyageurs Expeditionary High School, Minnesota Charter School No. 4107's basic financial statements and have issued our report thereon dated November 6, 2013.

**Internal Control Over Financial Reporting**

In planning and performing our audit, we considered Voyageurs Expeditionary High School, Minnesota Charter School No. 4107's internal control over financial reporting (internal control) to determine the audit procedures that are appropriate in the circumstances for the purpose expressing our opinions on the financial statements, but not for the purpose of expressing an opinion on the effectiveness of Voyageurs Expeditionary High School, Minnesota Charter School No. 4107's internal control. Accordingly, we do not express an opinion on the effectiveness of Voyageurs Expeditionary High School, Minnesota Charter School No. 4107's internal control.

*A deficiency in internal control* exists when the design or operation of a control does not allow management or employees, in the normal course of performing their assigned functions, to prevent, or detect and correct, misstatements on a timely basis. *A material weakness* is a deficiency, or a combination of deficiencies, in internal control such that there is a reasonable possibility that a material misstatement of the entity's financial statements will not be prevented, or detected and corrected on a timely basis. *A significant deficiency* is a deficiency, or combination of deficiencies, in internal control that is less severe than a material weakness, yet important enough to merit attention by those charged with governance.

Our consideration of the internal control over financial reporting was for the limited purpose described in the first paragraph of this section and was not designed to identify all deficiencies in internal control over financial reporting that might be material weaknesses or significant deficiencies. Given these limitations, during our audit we did not identify any deficiencies in internal control over that we consider to be material weaknesses. However, material weaknesses may exist that have not been identified.



**Compliance and Other Matters**

As part of obtaining reasonable assurance about whether Voyageurs Expeditionary High School, Minnesota Charter School No. 4107's financial statements are free of material misstatement, we performed tests of its compliance with certain provisions of laws, regulations, contracts, and grant agreements, noncompliance with which could have a direct and material effect on the determination of financial statement amounts. However, providing an opinion on compliance with those provisions was not an objective of our audit, and accordingly, we do not express such an opinion. The results of our tests disclosed no instances of noncompliance or other matters that are required to be reported under *Government Auditing Standards*.

**Purpose of this Report**

The purpose of this report is solely to describe the scope of our testing of internal control and compliance and the results of that testing, and not to provide an opinion on the effectiveness of the entity's internal control or on compliance. This report is an integral part of an audit performed in accordance with *Government Auditing Standards* in considering the entity's internal control and compliance. Accordingly, this communication is not suitable for any other purpose.

*Miller McDonald, Inc.*

November 6, 2013  
Bemidji, Minnesota