



3724 Bemidji Avenue North
Bemidji, MN 56601
218-444-3130

2020-2021
REOPENING PLAN

Dear Voyageurs Families,

The COVID-19 pandemic has brought unprecedented changes to our world, and school has been no exception. Under the direction of the Minnesota Department of Education, all public schools had to create different plans that align with three possible learning models for the 2020-2021 school year. Our school design team has been preparing an outline that provides you with some guidance to all three of the potential learning models that may occur during this upcoming school year.

Due to the unknown situations surrounding the pandemic, we may need to transition between any one of the three safe learning models with very little notice. We will prioritize the safety of our staff, students, and families as we prepare to provide our students with the best possible education and support to face these challenging times. Further information for these learning models can also be found in the [MN Safe Learning Plan](#) that has been put out by the State of Minnesota.

This link (<https://mn.gov/covid19/for-minnesotans/safe-learning-plan/safe-learning-faq.jsp>) has answers to some frequently asked questions on the Safe Learning Plan.

During the past several weeks, Voyageurs staff members have been working to develop plans for each of the three learning models. The decisions that Voyageurs made were informed by guidance from the Centers for Disease Control and Prevention, Minnesota Department of Health and the Minnesota Department of Education. We all have the desire to bring our students back as soon and as safely as possible. We will keep you informed as to any changes as they occur via our school website, morning announcements and Facebook page.

Voyageurs will continue to prioritize the safety of students, staff, and families as the pandemic continues to change. We recognize the different needs of our students, staff, and families and we will do our best to be flexible and accommodate those needs on a case by case basis.

This packet should help to answer most of your questions as to how Voyageurs is planning to keep everyone safe this school year in all three of the learning models.

Scott Anderson
Director/Covid-19 Program Coordinator

LEARNING MODELS

Voyageurs has prepared three different learning models that may need to be utilized during these unprecedented times as required by the Minnesota Department of Education. These models consist of **in-person learning, hybrid learning, and online learning**. All models are intended to follow a normal school day schedule of 8:30 am to 3:00 pm. Attendance and participation will be expected for all students in all classes as per school policy unless prior arrangements have been made. Below is a brief description of what each model will look like.

Traditional In-Person Model

- Students attend school, following enhanced safety precautions, including face coverings, cleaning, and other precautions as mandated by state officials.
- Students would attend school with normal hours and classroom settings.
- Families would have the option of online learning for the academic school year. In the event that they wish to change models, they will be allowed to do so at the quarter break.

Hybrid Learning Model

- Students will be divided into two groups. Students in Group A will attend school in the school building one week while students in Group B will be attending school online. The next week the groups will switch and Group B will be in the building while Group A will be learning online.
- Students will attend school during normal hours on the online platform or in person per the assigned week.
- Families would have the option of online learning for the academic school year. In the event that they wish to change models, they will be allowed to do so at the quarter break.

At-Home Learning Model

- All academic lessons will be taught via online by VES teachers and all academic work is to be completed at home.
- Students will attend school virtually during normal hours.
- Families would have the option of online learning for the academic school year. In the event that they wish to change models, they will be allowed to do so at the quarter break.

DETERMINING THE LEARNING MODEL

The learning model is determined by the amount of COVID-19 cases in the county per the [14-day County Level Case Rate](#). Currently Voyageurs is in the parameters to open within the **in-person learning** model for elementary students and **hybrid learning model** for secondary students. All Voyageurs students will be in the hybrid learning model. Learning model plans that Voyageurs follows could change during the school year depending on the current infection rate based on the 14-day rolling average in the county.

Learning Model Parameters

Number of cases per 10,000 over 14 days, by county of residence	Learning Model
0-9	In-person learning for all students
10-19	In-person learning for elementary students; hybrid learning for secondary students
20-29	Hybrid learning for all students
30-49	Hybrid learning for elementary students; distance learning for secondary students
50+	Distance learning for all students

IN-PERSON SPECIAL EDUCATION SERVICES DURING ONLINE LEARNING

Voyagers Expeditionary School will prioritize providing in-person direct special education services for students whose special education program calls for intensive services that cannot be provided in a distance learning setting. The Minnesota Department of Human Services defines intensive services as those which are received by individuals with the most significant disabilities. In schools, these students may include:

- Students who, due to their disability, cannot access their special education instruction remotely without significant adult support (e.g., needs hand over hand assistance, direct PCA services, and/or direct intervener services)
- Students needing intensive services requiring the use of specialized technology, equipment (e.g. stander, gait trainer, and other adaptive equipment), or augmentative/alternative communication, with direct adult support that is available in the school setting
- Students whose program contains functional goals and curriculum, activities of daily living, (e.g., toileting, eating, mobility), or highly modified materials requiring in-person instruction and progress monitoring
- Students requiring significant behavioral programming and implementation of a positive behavior support plan that cannot be provided in a distance learning environment

Parents of students whose programming needs may require prioritizing in-person direct special education services will be contacted by the student's case manager and offered a Team meeting to discuss the student's programming needs. The student's IEP (Individual Education Program) team should determine if in-person instruction and services at a school site are appropriate based on the student's individual needs to ensure the provision of FAPE (Free Appropriate Public Education) and based on the ability to ensure compliance with public health mandates and the individual student and family health situation. District staff are aware that they will need to be on-site to provide students with in-person instruction and services when this is determined safe to do so. When school administration determines that it is not safe, in accordance with public health guidelines, to provide in person instruction, students will receive instruction through distance learning.

IN-PERSON SPECIAL EDUCATION EVALUATIONS DURING ONLINE LEARNING

Voyagers Expeditionary School will prioritize conducting required in-person special education evaluation components while in a distance learning model. Parents of students who are in need of a special education evaluation/re-evaluation will be contacted by a member of the special education evaluation team to discuss the option of in-person administration of components that cannot be completed remotely. If a parent does not wish to have their student evaluated in-person while the district is in a distance learning model, the evaluation components which require in-person will be halted until hybrid learning is resumed. District staff are aware that they will need to be on-site to provide students with in-person special education evaluations when this is

determined safe to do so. When school administration determines that it is not safe, in accordance with public health guidelines, to provide in person evaluation, students will participate in evaluation through distance learning. Assessments that cannot be completed through the distance learning model will be put on hold and administered once it is safe to conduct the assessment in person.

TRANSPORTATION

Parents who are able to provide transportation for students are strongly encouraged to do so. All other students will be transported to school. Students will be required to wear face coverings while riding in the bus or other vehicle. Transportation of students is provided by ISD 31. Please see ISD 31’s Health and Safety Plan.

If you have more than one student that attends Voyageurs during Hybrid learning, you can request that they be in the same or different groups, according to what works best for your family’s needs. For example, if you’d like your students to attend the same week, you can choose that option. If you’d prefer your students to attend opposite weeks, you can choose that option. A schedule for the hybrid learning model to start the year will be determined by August 21st.

COVID SCHEDULE		
8:30-9:00	ADVISORY	
9:00-10:00	PERIOD 1	
10:00-11:00	PERIOD 2	
11:00-12:00	PERIOD 3*	
12:00-12:30	MS LUNCH/ HS BOOK CLUB	WED = RAMP UP
12:30-1:00	HS LUNCH/ MS BOOK CLUB	WED = RAMP UP
1:00-2:00	PERIOD 5	
2:00-3:00	PERIOD 6	

ATTENDANCE/GRADING/TESTING

Students will be expected to attend and participate in all classes as per the school policy listed in the Student Handbook. Participation requirements will be determined by the individual teacher including camera and microphone requirements for those who are online learning. The Covid Schedule is a 6-period day, rotating each hour. Grading policy and expectations will not be adjusted at this time.

The 2020-21 testing schedule was posted on the Voyageurs’ website prior to the start of the school year. The schedule assumes an in-person or a hybrid learning model. Voyageurs will not administer tests if a distance learning model is in use unless the Minnesota Department of Education is successful in creating an online testing platform.

<u>TEST</u>	<u>DATE</u>	<u>NOTES</u>
NWEA - Fall	Math - Wed., Oct. 7 (B)	Math - Grades 6-11

	Sci - Thur., Oct. 8 (B) Read - Fri., Oct. 9 (B)	Sci - Grades 8 & 10 Read - Grades 6-11
NWEA - Fall	Math - Mon., Oct. 12 (A) Sci - Tue., Oct. 13 (A) Read - Wed., Oct. 14 (A)	Math - Grades 6-11 Sci - Grades 8 & 10 Read - Grades 6-11
ACT	Tue., Oct. 6 (B week)	Seniors Only
ACT	Tue., Mar. 30 (A week)	Juniors
NWEA - Spring	Math - Tue., Mar. 16 (A) Sci - Wed., Mar. 17 (A) Read - Thur., Mar. 18 (A)	Math - Grades 6-11 Sci - Grades 8 & 10 Read - Grades 6-11
NWEA - Spring	Math - Tue., Mar. 23 (B) Sci - Wed., Mar. 24 (B) Read - Thur., Mar. 25 (B)	Math - Grades 6-11 Sci - Grades 8 & 10 Read - Grades 6-11
MCA - Read	Tue., April 6 (B)	Grades 6-8 & 10
MCA - Read	Tue., April 13 (A)	Grades 6-8 & 10
MCA - Math/Sci - 10	Tue., April 20 (B)	Grades 6-8 & 11
MCA - Math/Sci - 10	Tue., April 27 (A)	Grades 6-8 & 11
MCA - Sci - 8	Tue., May 4 (B)	Grade 8
MCA - Sci - 8	Tue., May 11 (A)	Grade 8

FOOD SERVICE

Meals will be provided regardless of the learning model.

- Breakfast and lunch will be served for students in the building.
- Cold lunch will be available for pick up at the school for students during online learning. Families will need to **Opt In** weekly for meal pick up to insure we have the appropriate amount of lunch and breakfasts prepared.
- Meals will be plated and delivered to students in the classroom
- Staff will be following the recommendation of masks and gloves.
- For the weeks the students are out of the building we ask that the school be notified by the PRIOR FRIDAY if your student will be picking up lunch for the following week. If you choose to opt in, this will be for the **ENTIRE** week.



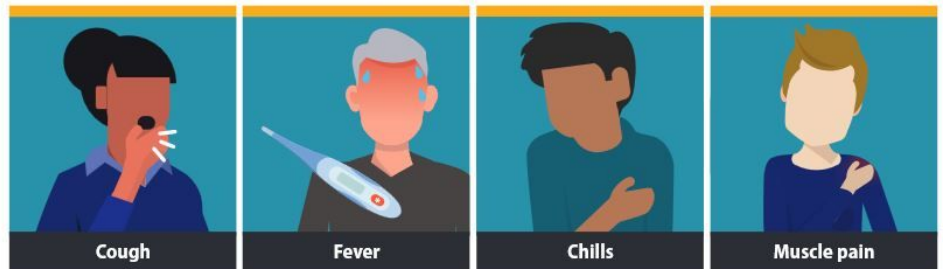
VISITORS

Visitors are strongly discouraged in the building to limit exposure to the COVID-19 virus. Should you require your child leave the school building during the day please contact the school upon your arrival and we will send the child out to your vehicle. If a meeting is to take place, prior arrangements will be made. Electronic or phone communication is encouraged at this time, including for parent/teacher conferences.

HEALTH & SAFETY PROTOCOLS

AT-HOME SCREENING

- Families are expected to take temperatures each morning before school. Anyone with a temperature of 100.4 or higher should **NOT** report to school.



- Additionally, students exhibiting other symptoms should **NOT** report to school. For an updated list of COVID symptoms, go to [CDC.gov](https://www.cdc.gov).



- Students should **NOT** report to school if you or your child came into close contact (15+ minutes) with someone who is being evaluated/tested for or has a laboratory confirmed COVID-19 diagnosis in the past 14 days

REPORTING SYMPTOMS & EXPOSURE

- Parents/Guardians are responsible for reporting symptoms or possible COVID-19 exposure to the school. Quarantine requirements as outlined by MDH must be followed after symptoms or exposure.
- Student's temperatures will be taken upon entering the building.
- Any student or staff member experiencing COVID-19 symptoms will be sent home and must comply with quarantine requirements outlined by MDH before returning to school.
- COVID-19 testing will be handled through non-school health officials (i.e. clinic, hospital)

For people who received a laboratory COVID-19 test:	For people with COVID-19 symptoms, without a medical evaluation:	For people with other diagnoses (ex. strep throat, influenza):
---	--	--

Positive test result: Stay home at least 10 days since symptoms first appeared AND no fever for at least 3 days without medication AND improvement of other symptoms.	Stay home at least 10 days since symptoms first appeared AND no fever for at least 3 days without medication AND improvement of other symptoms.	Stay home until symptoms have improved. Follow specific return guidance from the health care provider.
Negative test result, but symptoms with no other diagnosis: Same as above		

FACE COVERINGS

- All students and staff will be required to wear protective face coverings in the building and on buses.
- One cloth face covering will be provided to each student by Voyageurs. Face coverings should comply with the [Minnesota Department of Health \(MDH\) guidelines](#), covering the nose and mouth. Students may choose to use their own face covering that meets MDH guidelines.
- A medical exemption form is required for those not wearing a face mask.
- Face coverings may be removed only during meal times, or while outdoors, or when social distancing can be practiced, or as outlined in the [Minnesota Department of Health \(MDH\) 2020-2021 Planning Guide for Schools](#).
- Face coverings should be washed or changed daily.
- Parents should ensure that the student has a face mask prior to leaving home. Those who forget to bring their face covering to school will have one provided to them.
- Students who refuse to wear a face covering as required will be sent home and provided with online learning until they can return to school in compliance with face covering mandates.



EQUITY

- Voyageurs staff will work proactively and on an individual basis to support students and families as needed in areas such as, but not limited to:
 - Food insecurity
 - Homelessness
 - Childcare
 - Technology
 - Accessibility
 - IEPs
 - 504s
 - Other accommodations and modifications as needed

With the support/partnership of :

- Director
 - Teachers
 - School Counselor
 - Case Managers
 - Advisors
 - American Indian Liaison
 - Other Area Resources
- Voyageurs will continue to review structures, supports, and outreach to parents, students, and staff to promote positive school/family relationships, mental health, and enhance student learning.

Learning Loss

Voyageurs recognizes the learning loss that students may experience as a result of missing several months of in-person school. To address the learning loss of students:

- Teachers have revised curriculum maps for the 2020-21 school year to reinforce skills and content missed during the Spring of 2020.
- Voyageurs Design Team has a plan in place for ongoing monitoring and will work with students using evidence-based strategies on an individual basis.
- Voyageurs revised the daily schedule to increase academic enrichment for students in areas of need such as math and reading.

FAQ'S

Q. How will I be notified if my child is exposed to COVID-19?

- A. Official communications (by letter and/or telephone) will come from the school. We will not use social media to communicate exposure information. All communications will be done in coordination with local public health officials while maintaining confidentiality in accordance with FERPA and all other state and federal laws.

Q. What happens if a student in my child's class tests positive for COVID?

- A. With an identified diagnosis of COVID-19 in a class (a teacher, staff, or a student), we will notify parents via official school communication (by letter and/or telephone) and require the impacted student(s) in that class participate in online learning for a period of time as indicated by current CDC and MDH guidance. We will ask parents of other children to monitor them for symptoms and notify the school of any changes in health conditions.

Q. What platform will Voyageurs be using for all learning models?

- A. Voyageurs has decided to use the Google platform for all learning models this school year. Other resources may be classroom specific and will be indicated by the teacher.

Q. Will parents need to purchase school supplies this year?

- A. Voyageurs School has decided to be as paperless as possible to ensure seamless transitions between face-to-face and online learning. We feel this will also limit exposure to the COVID-19 virus. School supplies may be purchased to your preference unless otherwise specified by a specific teacher.

Q. What do I do if my student needs a device or does not have internet access?

- A. If you feel you do not have adequate internet or a device for your child to successfully complete online learning, please contact the school. We will issue school devices to students, and we will work with families regarding internet access issues.

Q. Will the school close if there is an outbreak of the virus?

- A. Short term school closures may be required with a confirmed outbreak of the COVID-19 virus. Voyageurs will work with local and state health agencies to determine when a closure or change to another learning model is necessary and will communicate any changes to families in a timely manner

Q. What other precautions is Voyageurs School taking?

- A. Voyageurs is increasing custodial duties to clean and sanitize several times a day. We will encourage frequent and proper hand washing from all students and staff. Hand sanitizing stations will be located throughout the school. Please review VES's Safety Policy and Procedures.

Q. Where will I find information to access resources for mental health and wellness?

- A. Click on the pink "Connect with School Counselor" button on the home page of our website. There are several resources, including the Crisis Text Line and a list of wellness apps to use. There is also an activity page that includes guided meditations, relaxation videos, movement clips and recipes to try! Need to meet with Kelly? Click on the "Connect with Me" tab and complete the Student Check-In form.

Q: What professional development is Voyageurs providing to staff?

- A. Staff will receive training in the specific areas listed below.
- Currently known COVID-19 Facts
 - Cleaning Methods and Schedule
 - Employee Right-to-Know
 - Personal Protective Equipment
 - Identifying Symptomatic Students
 - Screening Yourself
 - Peer to Peer Technology Training

VES will send home the MDH COVID-19 Decision Tree and MDH "Is it COVID-19"? to assist with symptom identification.